



morton.

Wentworth Point 530/43 Amalfi Drive

 1  1  1

The Waterfront is located moments to Sydney Olympic Park main venues, train station, Bicentennial Park and Millennium Parklands. Located in Corsica, this is your opportunity to move into this one bedroom apartment only a short stroll from The Promenade and The Piazza.

Apartment features:

- Apartment located on level five
- Combined living and dining rooms
- Split system air conditioning
- Full kitchen with great storage space
- Gas cooking and quality finishes throughout
- Great size bedroom with built-in wardrobes
- Laundry room and clothes dryer
- Single car space and storage cage

View

As advertised or by appointment

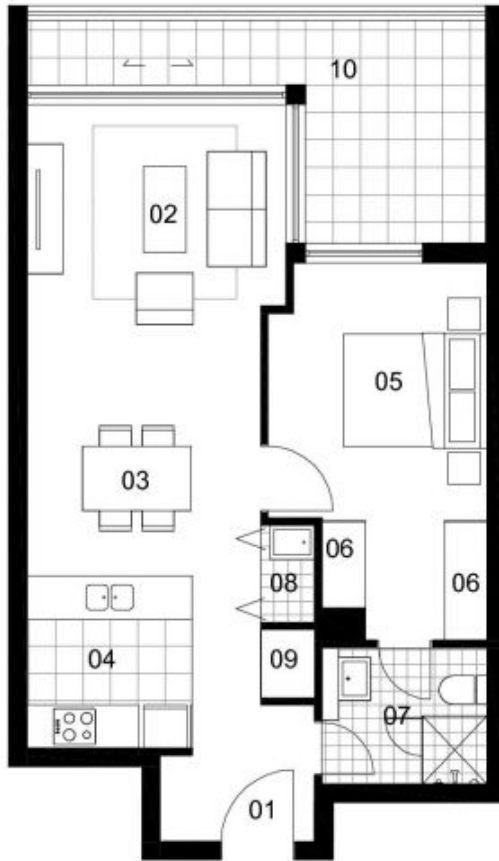
Agent

Morton RE



 rentals@morton.com.au

morton.com.au



LOCATION PLAN

UNIT 530
 1 BEDROOM

INTERNAL AREA	55 sqm
TERRACE AREA	11 sqm
TOTAL AREA	66 sqm

- | | |
|-------------------|----|
| ENTRY | 01 |
| LIVING | 02 |
| DINING | 03 |
| KITCHEN | 04 |
| BEDROOM | 05 |
| WARDROBE | 06 |
| ENSUITE/BATHROOM | 07 |
| LAUNDRY | 08 |
| STORE | 09 |
| BALCONY/COURTYARD | 10 |

CORSICA

Disclaimer: The particulars are set out as a general outline for the guidance of intending purchasers and do not constitute an offer or contract. All descriptions, dimensions, references to conditions and necessary permissions for use and other details are given in good faith and are believed to be correct, but any intending purchasers should not rely on them as statements or representations of fact, but must satisfy themselves by inspection or otherwise to the correctness of each item, and where necessary seek independent advice. No third party supplier or their agents has any authority to make or give any representations or warranty in relation to this property. * External areas may be larger for courtyard apartments. Refer to the detailed area schedule.