



morton.

Wentworth Point 423/8 Stromboli Strait

 2  2  1

The Waterfront is located moments to Sydney Olympic Park main venues, train station, Bicentennial Park and Millennium Parklands. Located in Rimini, this is your opportunity to move into this split level two bedroom apartment, only a short stroll from The Promenade and The Piazza.

Apartment features:

- Built-in-robos in both rooms
- Open plan living area with split system air conditioning which opens out onto entertaining balcony.
- Caesar stone kitchen with stainless steel appliances and gas cooking.
- Modern bathroom plus en suite to main
- Internal laundry with dryer.
- Security building with outdoor pool
- Single car space plus storage

View

As advertised or by appointment

Agent

Morton RE

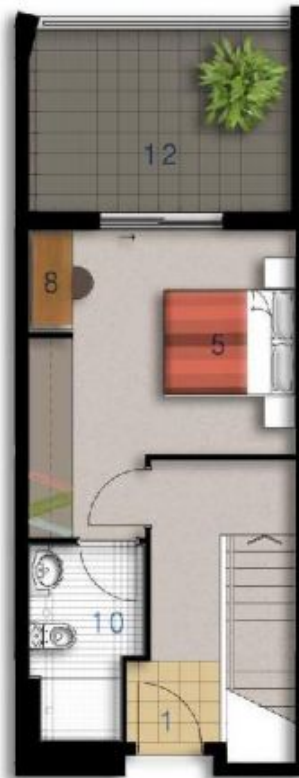


 rentals@morton.com.au

morton.com.au

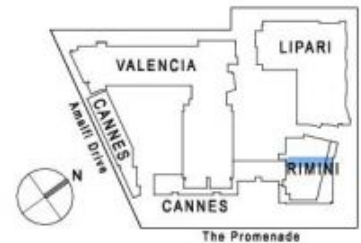


LOWER



UPPER

ENTRY	01
LIVING	02
DINING	03
KITCHEN	04
BEDROOM 1	05
BEDROOM 2	06
STUDY	08
BATHROOM	09
ENSUITE	10
LAUNDRY	11
BALCONY	12
STORAGE	14
CLOTHES DRYING	15



rimini

Unit 423

Lot Number	168
Type	2 Bedroom
Unit Area	99m ²
Balcony	29m ²
Total	128m ²
Scale	1:100
Revision	A [16.02.07]

0 2.5 5M

Disclaimer: All Layouts are indicative only, and subject to change.