



# morton.

**Penrith** 401/81C Lord Sheffield Circuit

 2  2  1

Thornton Central apartments are located on the north side of Penrith train station with park and district views, some with water views towards the picturesque Blue Mountains, situated in the master-planned community Thornton Estate, offering convenient apartment living only metres to Westfield shopping centre, local parks and quality restaurants and cafes.

#### Features

- Large north-facing aspect covered balcony
- Semi ensuite main bathroom with two-way access
- Timbered open living and dining, LED lighting throughout
- Filled with natural light from the floor to ceiling windows
- Reverse cycle A/C, block-out roller blinds throughout
- Eat-in kitchen with stone bench-tops, soft close cupboards
- Four burner stove top with stainless steel appliances
- Carpeted bedroom with mirrored walk-in robes
- NBN ready, MATV/PayTV points in living & bedroom
- Quality bathroom with mirrored vanity cabinet
- Large internal laundry with dryer

#### View

As advertised or by appointment

#### Agent

**Morton RE**

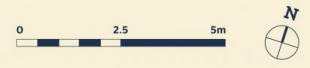
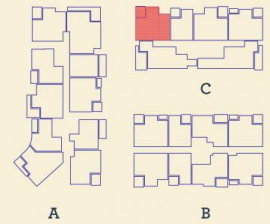


 [rentals@morton.com.au](mailto:rentals@morton.com.au)

[morton.com.au](http://morton.com.au)

*Apartment*

2 BED- C 401



Internal	76 m <sup>2</sup>
External	8 m <sup>2</sup>
<b>Total</b>	<b>84 m<sup>2</sup></b>

DATE ISSUED 27/07/2015  
VERSION 02

Developed by St Hilliers FIRST POINT PROJECTS | Sales by LINK Home Land Direct [thorntoncentral.com.au](http://thorntoncentral.com.au)

**Disclaimer:** This floor plan has been prepared for marketing purposes only. All descriptions, dimensions, depictions and other details in this floor plan together, the "Information" may not be to scale. The vendor reserves the right to vary or amend the Information without notice. The Information may vary from the actual dimensions, layout and characteristics of the property as built. No third party has any authority whatsoever, either expressly or impliedly, to make or give any representation or warranty or to bind the vendor in connection with the information or the property.

**THORNTON**