



# morton.

**Zetland** 926 Elizabeth Street

 2  1  1

Freestanding to the north and enjoying an abundance of natural light plus tranquil leafy outlooks, this renovated terrace offers chic urban living in a great location close to Green Square Station, "East Village" shopping centre, cafes and restaurants.

Features include:

- Stylishly renovated interiors, quality finishes throughout
- Flowing open plan layout with distinct living and dining
- Flow to covered alfresco dining and lush irrigated garden
- Chef's Ilve & Miele gas kitchen features stainless steel benchtops
- Two bedrooms each include built-ins and original fireplace
- Designer bathroom with bathtub and heated tiled flooring
- Ducted air conditioning, separate laundry, additional w/c
- Rear lane access
- Please note that the garage door has been updated and the bedroom wall is no longer that colour.

**View**

As advertised or by appointment

**Agent**

**George Reale**

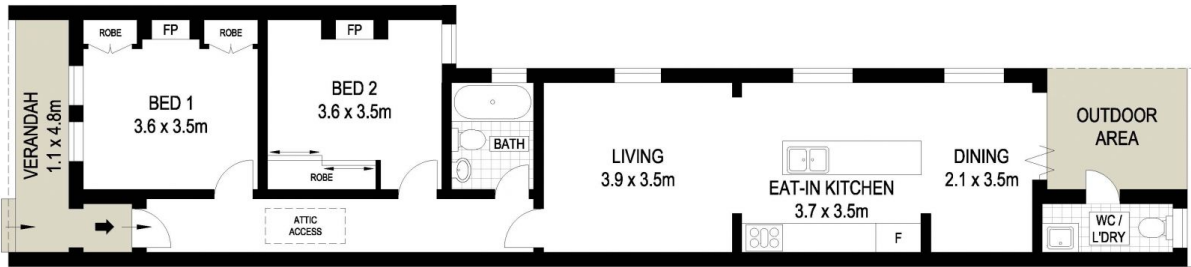
 0408 014 469

 [george@morton.com.au](mailto:george@morton.com.au)

[morton.com.au](http://morton.com.au)



SITE PLAN (NOT TO SCALE)



GROUND FLOOR

APPROX. INT: 113 m<sup>2</sup>  
 APPROX. EXT: 57 m<sup>2</sup>  
 LAND: 153 m<sup>2</sup>



0 1 2 3 4 5

Scale in metres. Indicative only. Dimensions are approximate. All information contained herein is gathered from sources we believe to be reliable. However we cannot guarantee its accuracy and interested persons should rely on their own enquiries

926 Elizabeth Street, Zetland