



# morton.

**Mosman** 9/116 Belmont Road

 2  2  2

Designed by award winning architects Bates Smart, with elegant exterior finishes across the articulated façade complement the heritage residences nearby. One of four townhouses, peacefully nestled at the rear of this spectacular boutique garden complex provides an idyllic sanctuary of light and space. Natural palettes in soft and rich tones are created by the quality choices sourced for this space.

- East/West aspects with garden outlook
- Well-proportioned living area at the front filled with natural light
- Elegant kitchen with Premium Miele appliances and gas cooking
- Calcutta marble counter tops and splashback
- Superior tapware feature throughout the bathroom and ensuite
- Main bathroom with bath tub plus a powder room with internal laundry
- Ducted system reverse cycle air conditioning
- Sliding glass doors open to well-proportioned courtyard with

### View

As advertised or by appointment

### Agent

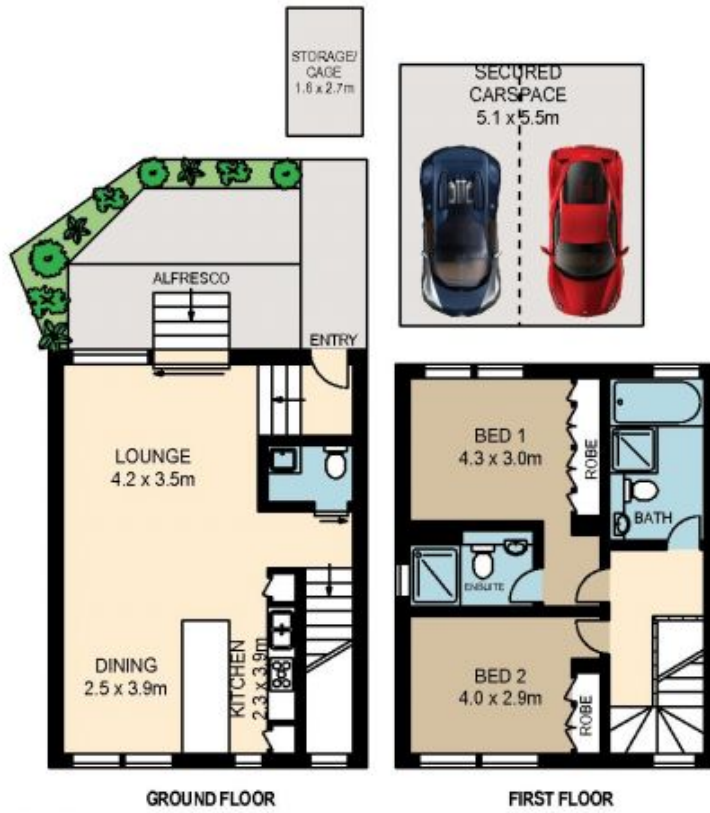
**Sarah Fowell**

 0437 492 129

 sarah@morton.com.au

[morton.com.au](https://www.morton.com.au)

9/116 BELMONT ROAD, MOSMAN



0 1 2 3 4 5

**Asset**  
Photographers  
www.assetphotographers.com.au

Please note these measurements are approximate only. The plans is intended as a rough guide for illustrative purpose. It is not warranted or guaranteed to be correct nor it is part of the sale or rental contract

