



morton.

Wentworth Point 610/27 Hill Road

 1  1  1

The Waterfront is located moments to Sydney Olympic Park main venues, train station, Bicentennial Park and Millennium Parklands. Located in Corsica, this is your opportunity to move into this one bedroom apartment only a short stroll from The Promenade and The Piazza.

Apartment features:

- Full kitchen with stainless steel appliances
- Quality finishes throughout
- Open plan living leading onto balcony
- Laundry room and clothes dryer
- Single car space + storage cage

View

As advertised or by appointment

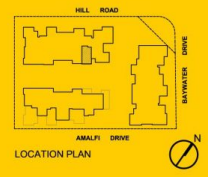
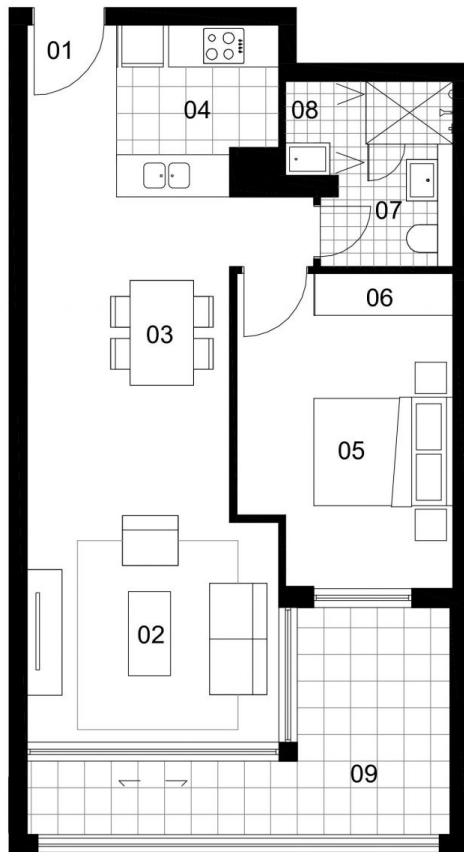
Agent

Morton RE



 rentals@morton.com.au

morton.com.au



UNIT 610

1 BEDROOM

INTERNAL AREA	: 55 sqm
TERRACE AREA	: 10 sqm
TOTAL AREA	: 65 sqm

ENTRY	01
LIVING	02
DINING	03
KITCHEN	04
BEDROOM	05
WARDROBE	06
BATHROOM	07
LAUNDRY	08
BALCONY/COURTYARD	09

Disclaimer: The particulars are set out as a general outline for the guidance of intending purchasers and do not constitute an offer or contract. All descriptions, dimensions, references to conditions and necessary permissions for use and other details are given in good faith and are believed to be correct, but any intending purchasers should not rely on them as statements or representations of fact, but must satisfy themselves by inspection or otherwise to the correctness of each item, and where necessary seek independent advice. No third party supplier or their agents has any authority to make or give any representations or warranty in relation to this property. * External areas may be larger for courtyard apartments. Refer to the detailed area schedule.

CORSICA