



morton.

Woolloomooloo 102/6 Cowper Wharf Roadway

🛏 1 🚿 1 🚗 1

Flooded with light and immaculately maintained for a flawless harbourside lifestyle of convenience and character, this exceptional residence defines quality. Occupying a prized lower level position with direct access to the iconic boardwalk, this is the perfect investment or first home opportunity.

- With an extremely spacious 31sqm entertaining deck
- Stylishly presented with contemporary living in mind
- Light-filled master bedroom with ensuite and built-in
- Generously sized combined lounge and dining area
- Designer kitchen, granite benches, gas appliances
- Lincoln Crescent parking space, laundry and air-con

View

As advertised or by appointment

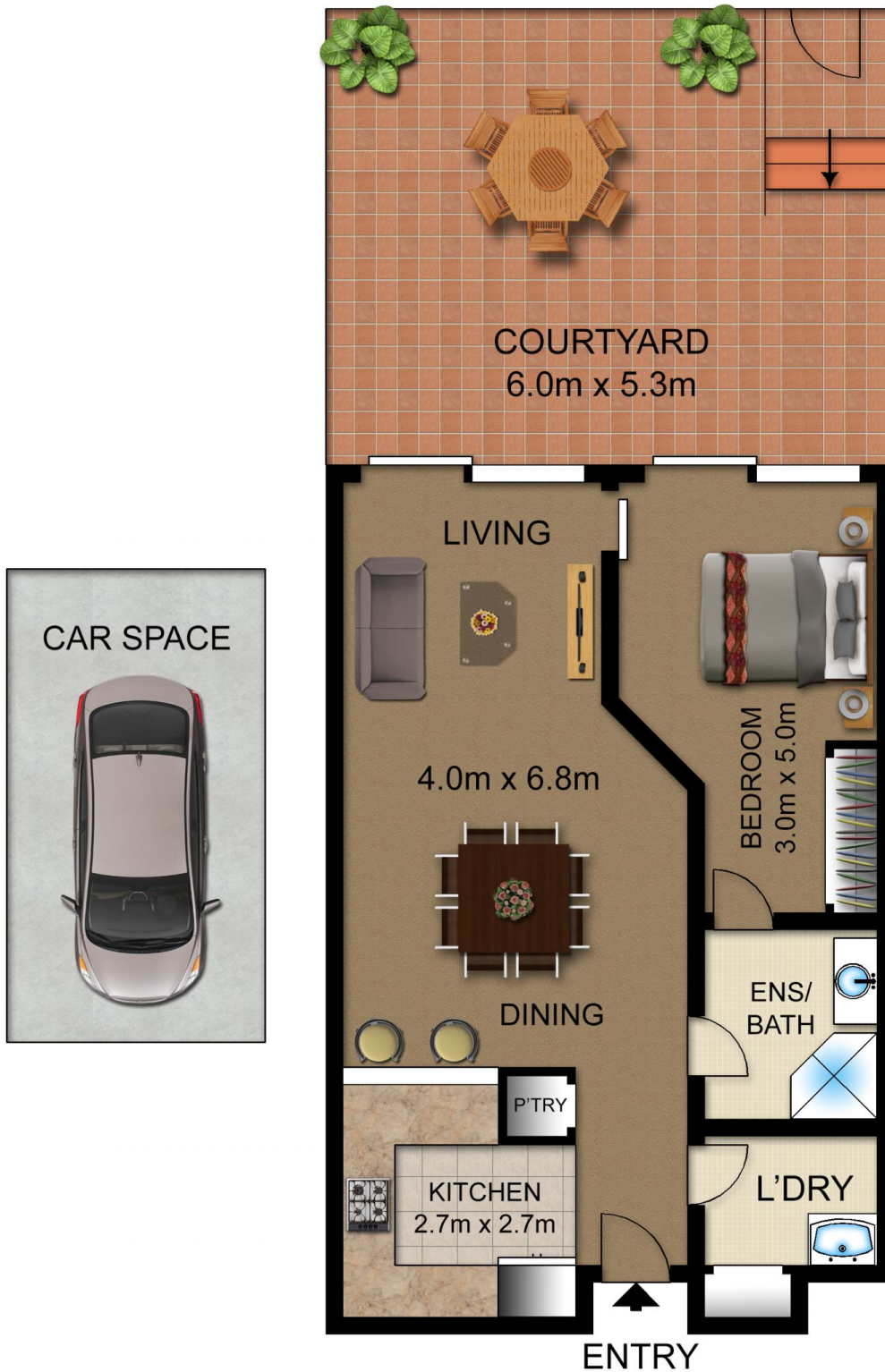
Agent

Noel Jenkins

📞 0410 593 694

✉ noel@morton.com.au

morton.com.au



102/6 Cowper Wharf Road, WOOLLOOMOOLOO

Not to scale • All measurements are approximate • Drawn for marketing purposes only • Floorplan by © Industrie Media

