



# morton.

Wentworth Point 2306/46 Savona Drive

1 1 1

## DEPOSIT TAKEN

Situated within the sought after Taiga building this is your chance to see this spacious one bedroom apartment with timber flooring.

With convenient access to shops, cafés and the footbridge to Rhodes, this apartment offers lifestyle with great water views.

### Apartment features:

- Timber floor
- Good size study
- High level with water view
- Bedroom with built-in wardrobe
- Full size kitchen , gas cooking + stainless steel appliances
- Open plan living + dining area
- Generous study area
- Split system air conditioning
- Internal laundry + dryer
- One car space

[morton.com.au](http://morton.com.au)

## View

As advertised or by appointment

## Agent

**Morton**



info@morton.com.au

the  
ADDRESS

WENTWORTH POINT

TAIGA

APARTMENT A2306

1 Bed/1 Bath

62 sqm

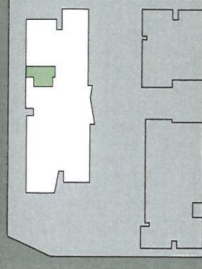
8 sqm

70 sqm

Internal Area

External Area

Total Area



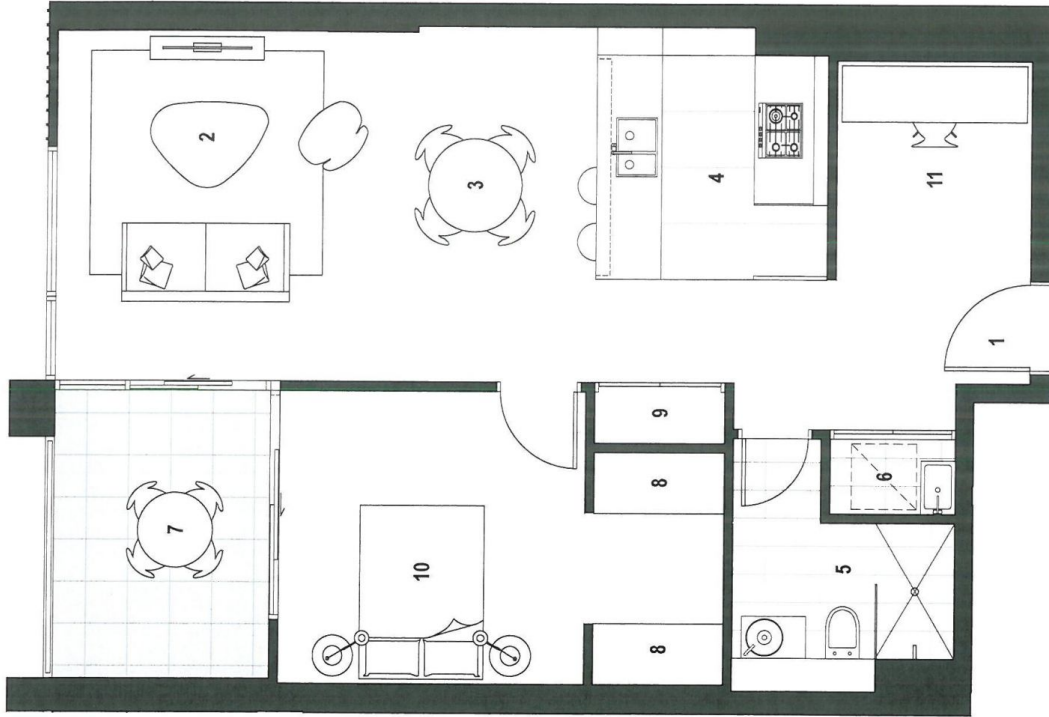
Level 23



KEY

- 01 Entry
- 02 Living
- 03 Dining
- 04 Kitchen
- 05 Bathroom
- 06 Laundry
- 07 Balcony
- 08 Robe
- 09 Store
- 10 Bedroom
- 11 Utility

1800 333 818  
TheAddressApartments.com.au



Revision 01 29/05/15

For further information, please refer to the architectural drawings. Dimensions are given in millimetres and rounded to the nearest millimetre. All dimensions are approximate and subject to change without notice. The developer is not responsible for any errors or omissions. The drawings are for information only and do not constitute an offer of any financial product. The drawings are for information only and do not constitute an offer of any financial product. The drawings are for information only and do not constitute an offer of any financial product.