



**morton.**

**Penrith** 802/8 Aviators Way

 1  1  1

This beautiful level 8 apartment is situated in the master planned Thornton Estate, on the north side of Penrith train station with uninterrupted park, district views and water views towards the picturesque Blue Mountains, offering convenient apartment living only metres to Westfield shopping centre, local parks and quality restaurants and cafes.

#### Features

- North facing with covered balcony, modern dark colour scheme
- Spectacular views to the picturesque Blue Mountains
- Open living and dining with engineered timber flooring
- Eat-in kitchen with stone bench-tops, soft close cupboards
- Gas stove top, stainless steel appliances, mirrored splash-back
- LED lighting throughout, reverse-cycle air conditioning
- NBN ready, TV points, data points in the living room & bedroom
- Wool-blend carpeted bedroom, mirrored built-in robes
- Bathroom w mirrored vanity cabinet, internal laundry with

#### View

As advertised or by appointment

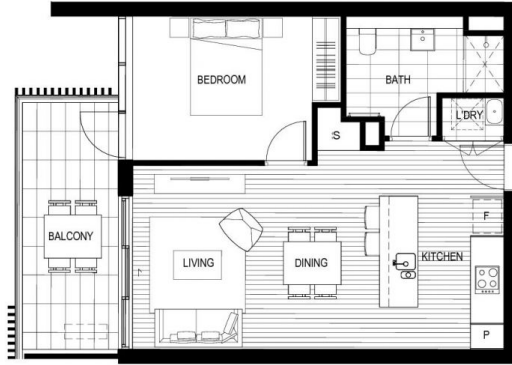
#### Agent

**Amy Torbarina**

 0438 977 172

 amy@morton.com.au

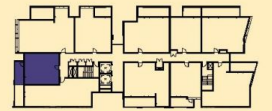
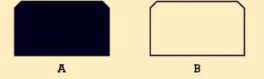
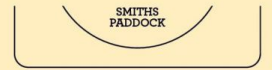
**morton.com.au**



# A802

## BUILDING A

1 1 1



INTERNAL: 54M<sup>2</sup>  
 EXTERNAL: 10M<sup>2</sup>  
 TOTAL: 64M<sup>2</sup>



DATE ISSUED: 04.11.2015  
 VERSION: 01

Developed by **StHilliers** **FIRST POINT PROJECTS** | Sales by **LINK** **Home LandDirect** **THORNTONCENTRAL.COM.AU**

**Disclaimer:** This floor plan has been prepared for marketing purposes only. All descriptions, dimensions, depictions and other details in this floor plan (together, the "Information") may not be to scale. The vendor reserves the right to vary or amend the Information without notice. The Information may vary from the actual dimensions, layout and characteristics of the property as built. No third party has any authority whatsoever, either expressly or impliedly, to make or give any representation or warranty or to bind the vendor in connection with the information or the property.

**Sheffield**  
 THORNTON