



# morton.

**Waterloo** 207/828 Elizabeth Street

2 2 1

Quietly positioned in near-new 'Madison', a cutting-edge development by award winning architects Nettleton Tribe, this spacious apartment enjoys an east facing aspect away from Elizabeth Street with courtyard garden views and is only footsteps to Waterloo Park. It offers open plan living with floor-to-ceiling windows plus a terrace-sized balcony, while the walk-to-everywhere location is perfectly aligned with the needs of lifestyle buyers.

- Brilliant natural light and premium quality finishes throughout
- Generous living area flows to alfresco dining and entertaining
- Integrated stone kitchen with s/steel European appliances
- Two double bedrooms both featuring quality built-in robes
- Stylish main bathroom, master ensuite and internal laundry
- Intercom entry, bamboo flooring and ducted air-con/heating
- Secure parking and an inviting residents' communal garden

### View

As advertised or by appointment

### Agents

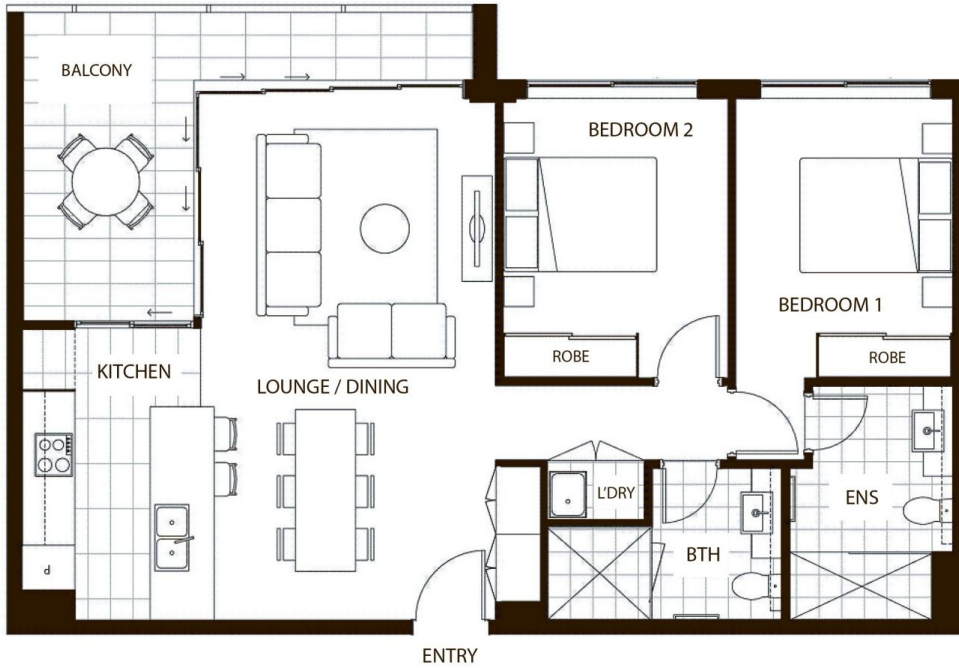
#### Sarah Fowell

0437 492 129  
 sarah@morton.com.au

#### Calvin Chan

0406 888 028  
 calvin@morton.com.au

[morton.com.au](http://morton.com.au)



## 207/828 Elizabeth St Waterloo

All measurements are approximate only. Plan is provided as an indication of layout

