



morton.

Potts Point 212/81 Macleay Street

1 1

Perfectly positioned in the popular 'Ikon' building, this generous sized loft-style apartment offers a convenient lifestyle in one of best streets in Potts Point. With floor to ceiling glass sliding doors in the lounge room it maximises natural light and emphasises the natural flow of indoor/outdoor open plan living.

- Split level design with spacious 4 metre high ceilings
- Oversized living space with room for dining and study areas
- Double height glass with sliding doors opening to balcony
- Premium kitchen with granite surfaces and Miele appliances
- Architectural design featuring stylish contemporary staircase
- Mezzanine bedroom with built-ins, ducted air conditioning
- Facilities include gym, heated pool with spa and sauna
- Security building with 24 hour concierge, pet friendly
- Furniture can be included in the sale of the property

View

As advertised or by appointment

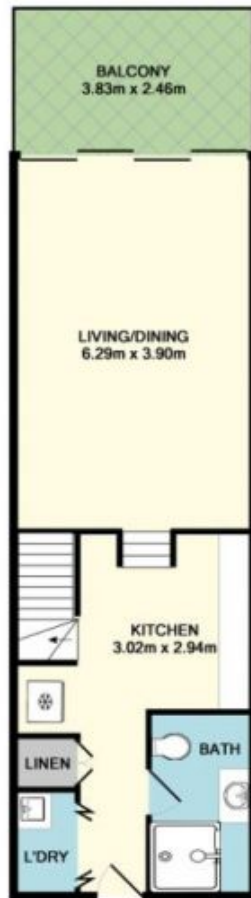
Agent

Noel Jenkins

0410 593 694

noel@morton.com.au

morton.com.au



1ST FLOOR
APPROX. FLOOR
AREA 17.2 SQ.M.
(186 SQ.FT.)

GROUND FLOOR
APPROX. FLOOR
AREA 49.7 SQ.M.
(535 SQ.FT.)

TOTAL APPROX. FLOOR AREA 66.9 SQ.M. (720 SQ.FT.)

Whilst every attempt has been made to ensure the accuracy of the floor plan contained here, measurements of doors, windows, rooms and any other items are approximate and no responsibility is taken for any error, omission, or mis-statement. This plan is for illustrative purposes only and should be used as such by any prospective purchaser. The services, systems and appliances shown have not been tested and no guarantee as to their operability or efficiency can be given.

Made with Metropix 62019