



**morton.**

**St Leonards** 1105/1 Marshall Avenue

 1  1  1

Leased after first open home. All future inspections cancelled.

Spacious and stylish North Shore Living in a peaceful and quite tree-lined street just moments from everything you need. Embassy Tower residencies sits in St Leonards exclusive dress circle, it is a true jewel in the crown. The delicate, refined and modern interiors further defines this glamorous apartment.

- Floor to ceiling windows throughout provide an abundance of natural light
- Kitchen with stone bench-tops, Miele appliances, dishwasher, integrated fridge/freezer and mirrored splashbacks
- LED downlights, ducted reverse-cycle air-conditioning, and audio-visual intercom
- Modern bathroom with floor to ceiling tiles and frame-less glass shower screen
- Light and bright balcony with access from lounge room and bedroom

#### View

As advertised or by appointment

#### Agent

**Sarah Fowell**

 0437 492 129

 sarah@morton.com.au

**morton.com.au**



# EMBASSY

TOWER



## APARTMENTS

505, 605, 705, 805,  
905, 1005, **1105**

1 BEDROOM

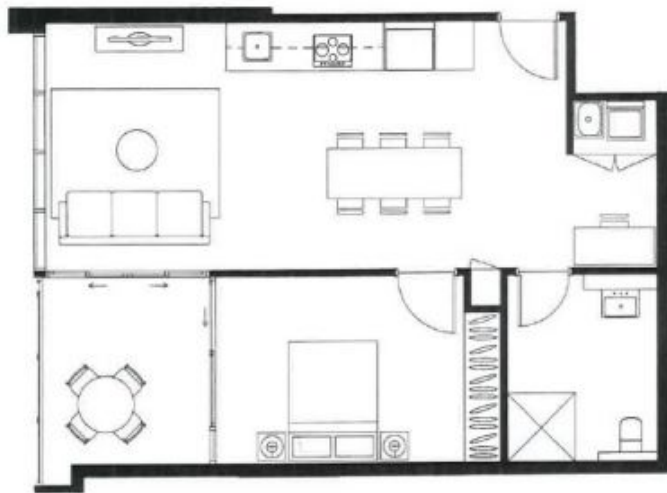
INTERNAL	59 m <sup>2</sup>
EXTERNAL	8 m <sup>2</sup>
TOTAL	67 m <sup>2</sup>



LEVELS 5-11

[www.embassytower.com.au](http://www.embassytower.com.au)  
**1800 775 911**

LOFTEX CBRE



N

Disclaimer: Please note that the floor plan was produced prior to construction. The information is believed to be correct but is not guaranteed. Changes may be made during construction and dimensions, areas, fittings, fixtures and specifications are subject to change without notice in accordance with the provisions of the contract for sale. The furniture and furnishings depicted are not included with any sale and purchasers must refer to their contract for sale for the list of inclusions. The position of the furniture and furnishings should not be taken to be indicative of final positions of power points, tv connection points and the like. Prospective purchasers must rely on their own enquiries. All graphics including the layout and boundaries and the like are indicative only. Submittals for services are not depicted. The floor plan is of an unclassified state.

Page 1