



# morton.

**Waterloo** C421/810 Elizabeth Street

 2  2  1

This two bedroom apartment represents quality living in the Waterloo precinct. Space, comfort and abundance of natural light are some of the features. Will suit professional couple or professional sharers.

Features include:

- Open plan living & dining area with floorboards
- Two good sized carpeted bedrooms
- Both bedrooms with built ins and master with en suite
- Kitchen offers ample bench space with stainless steel appliance
- Integrated fridge /freezer and dishwasher
- Alfresco style balcony great for all year around use
- Ducted and zoned air-conditioning
- Internal laundry with dryer
- Security intercom access
- Secure parking and storage cage

**View**

As advertised or by appointment

**Agent**

**Sarah Fowell**

 0437 492 129

 sarah@morton.com.au

[morton.com.au](http://morton.com.au)

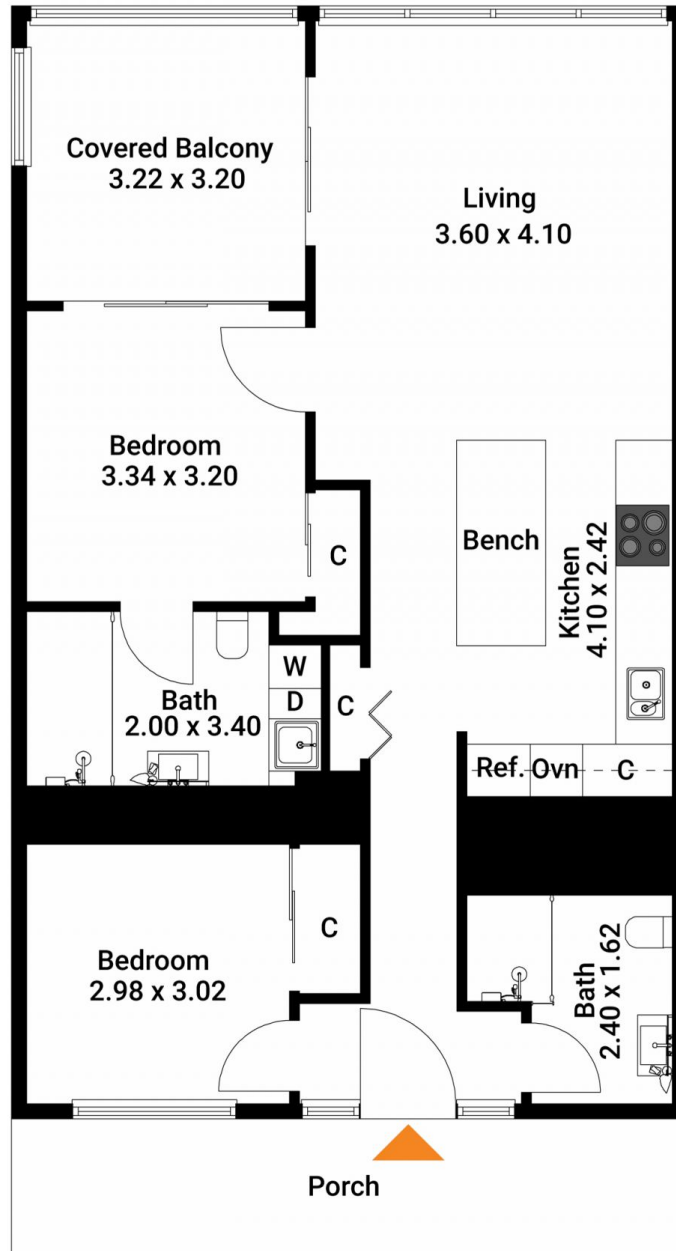


The interior style and design of this floor plan is designed for inspiration purposes to show the living spaces. It is not an exact replica of the furniture and fittings in the home.

Produced by DIAKRIT



(Not In Position)



The floor plan is not to scale. Measurements are indicative and in metres.

Produced by DIAKRIT