



morton.

Glenmore Park 4 Dutba Place

 3  2  2

Positioned at a quiet street in the highly sought-after Glenmore Park, few minutes drive to shopping centre, parks and local prestige schools, this well presented spacious three bedroom family home features with double lockup garage, covered alfresco area, ducted air-conditioning and a large private backyard.

- Single-level three bedroom house with triple zoned ducted A/C
- Quality timber flooring throughout in the living and dining
- Entertainer's open kitchen with sizeable stone benchtop
- Large covered alfresco entertaining area in the backyard
- All bedrooms with built-in robes, main with quality ensuite
- Landscaped low maintenance front yard, wide frontage
- Large backyard with garden shed, clothesline, side gate access
- Double lockup garage with internal access to the living and backyard

- Pets OK pending owner's approval.

View

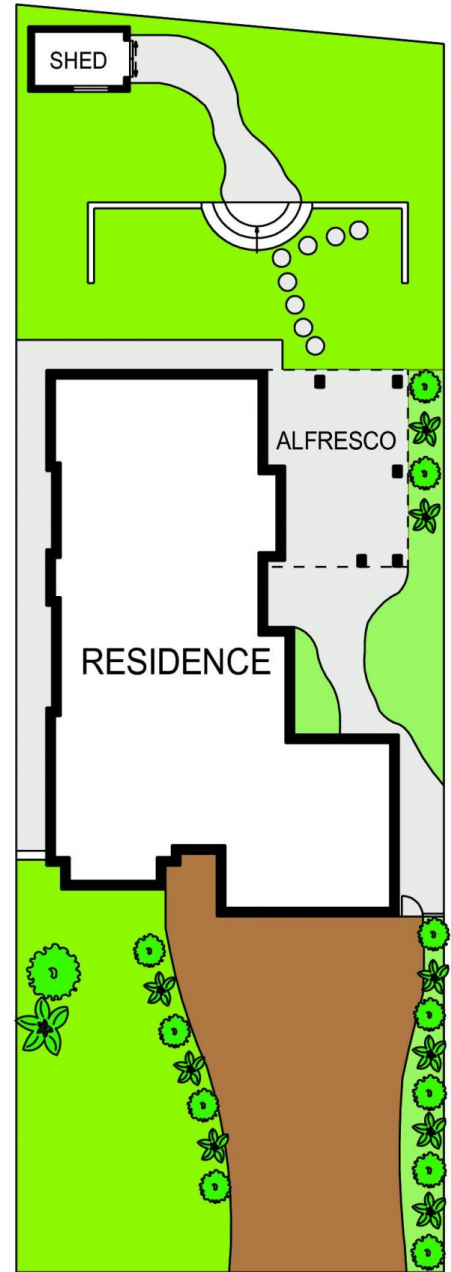
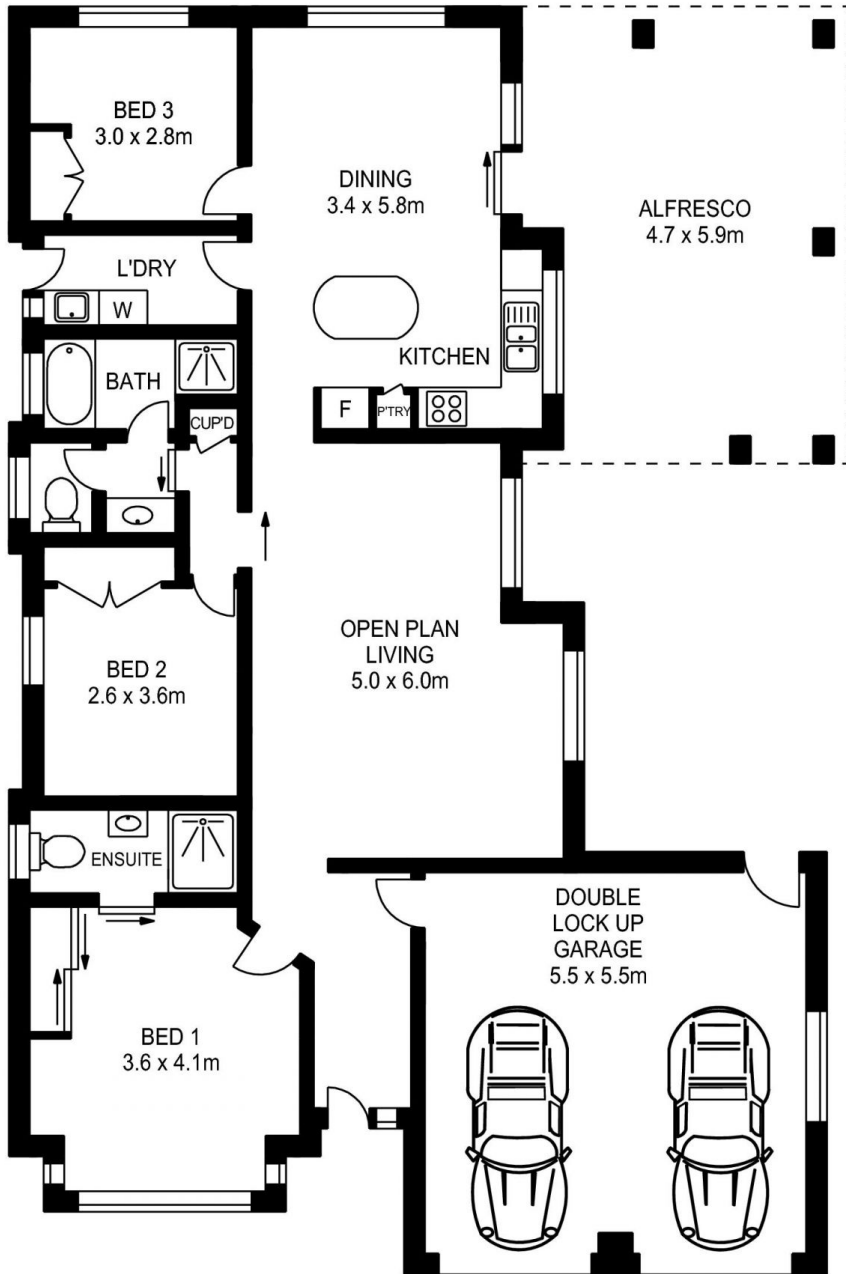
As advertised or by appointment

Agent

Morton RE

 [rentals@morton.com.au](tel:)

morton.com.au



INTERNAL AREA : 140m²
 ALFRESCO AREA : 29m²
 TOTAL AREA : 169m²

4 DUTBA PLACE, GLENMORE PARK



www.assetphotographers.com.au

Please note these measurements are approximate only. The plans are intended as a rough guide for illustrative purposes. It is not warranted or guaranteed to be correct nor is it a part of the sale or rental contract.

