



# morton.

Penrith 525/1-39 Lord Sheffield Circuit

🛏 2 🚿 2 🚗 1

Located in the hub of North Penrith, Harts Landing apartments are brand new, unfurnished and offer contemporary urban living in a master planned vibrant community called Thornton Estate. Only metres from Penrith train station, Westfield shopping centre and local parks.

#### Features

- Large covered balcony, north facing with ample natural light
- Tiled open living and dining area, efficient LED lighting throughout
- Reverse cycle air conditioning, block-out roller blinds throughout
- Stylish kitchen with stone bench-tops, soft close drawers & cupboards
- Gas stove top with stainless steel dishwasher, microwave and oven
- Wool-blend carpeted bedrooms with mirrored built-in robes
- NBN ready, Data/TV/PayTV points in the living & bedroom
- Quality bathroom/ensuite with mirrored vanity cabinet
- Internal laundry with dryer

[morton.com.au](http://morton.com.au)

#### View

As advertised or by appointment

#### Agent

**David Lipman**

📞 0409 663 535

✉ [david@morton.com.au](mailto:david@morton.com.au)



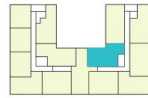
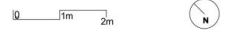
## BUILDING A

### LEVEL 5

#### APARTMENT A525 LOT 52

2 BEDROOM + STUDY

|               |                        |
|---------------|------------------------|
| INTERNAL AREA | 70m <sup>2</sup>       |
| EXTERNAL AREA | 12m <sup>2</sup>       |
| <b>TOTAL</b>  | <b>82m<sup>2</sup></b> |



Disclaimer: This floor plan has been prepared for marketing purposes only. All descriptions, dimensions, depictions and other details in this floor plan may not be to scale and may vary from the property as built. Your attention is drawn to the special conditions of the contract for sale of land. No third party has any authority to make or give any representation or warranty in relation to the property unless the representation or warranty is confirmed by the vendor and included in the contract for sale of land. Revised floor plans - 14.08.18

**CALL 1300 548 588**  
**HARTSLANDING.COM.AU**  
 LORD SHEFFIELD CIRCUIT, PENRITH  
**LINK DISPLAY SUITE**  
 22 GADIGAL AVENUE, ZETLAND

PROUDLY DEVELOPED BY **PAYCE** SALES BY **LINK**