



morton.

Wentworth Point 651/5 Baywater Drive

 2  2  1

The Waterfront is located moments to Sydney Olympic Park main venues, train station, Bicentennial Park and Millennium Parklands. Located in Palermo, this is your opportunity to move into this two bedroom apartment only a short stroll from The Promenade and The Piazza.

Apartment features:

- Main bedroom with ensuite
- Open plan living + dining
- Split system air conditioning
- Kitchen equipped with stainless steel appliances
- Internal laundry and dryer
- Extremely versatile 18sqm balcony
- One secure car space + storage cage

View

As advertised or by appointment

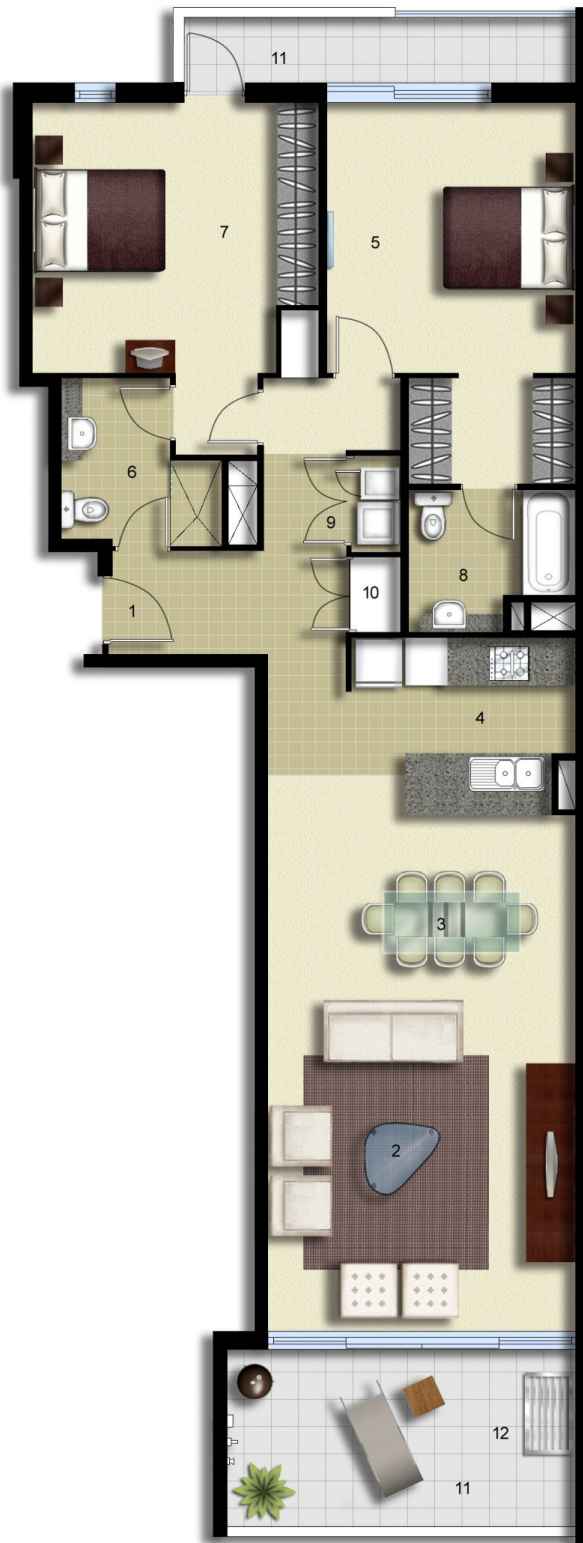
Agent

Morton RE



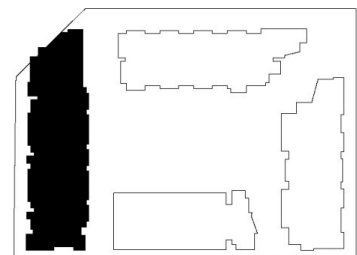
 rentals@morton.com.au

morton.com.au



- ENTRY 1
- LIVING 2
- DINING 3
- KITCHEN 4
- MAIN BEDROOM 5
- BATHROOM 6
- BEDROOM 2 7
- ENSUITE 8
- LAUNDRY 9
- LINEN 10
- TERRACE 11
- CLOTHES DRYING 12

LEVEL 06



PALERMO

UNIT: **651**

TYPE: **2 Bedroom**

UNIT AREA: **106.0 sqm**

OUTDOOR AREA: **18.0 sqm**



Disclaimer: All layouts are indicative only, and subject to change.

ALLEN JACK+COTTIER



0 2.5 5M