



# morton.

**Pyrmont** 60/1 Murray Street

 2  2  1

With respect to the government's restrictions around open homes and to help stop the spread of COVID-19, our properties can be viewed by appointment only. Please submit an online enquiry or contact the listing agent for more information.

Occupying a coveted corner position on the edge of Darling Harbour, this apartment is a sanctuary in the city. Located across the road from the Pyrmont Bridge, on Darling Harbour's doorstep, this spacious two bedroom apartment is situated on the ground level boasting a huge private courtyard with garden beds and a north facing aspect into the common gardens, creating quiet and peaceful living.

- Huge private courtyard ideal for alfresco living and entertaining.
- Spacious open plan carpeted lounge and dining with floor to ceiling windows and ground level access.
- Leafy north facing courtyard.
- Gourmet gas kitchen with ample granite bench and storage space, breakfast area and smeg stainless steel integrated

### View

As advertised or by appointment

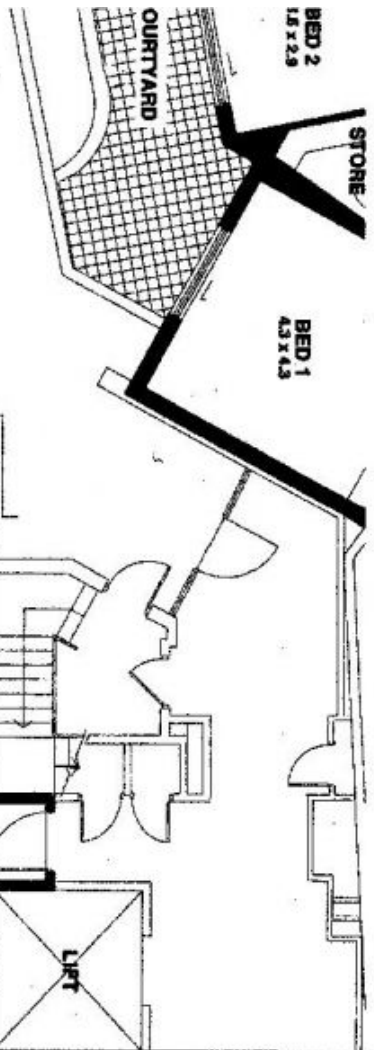
### Agent

**Sarah Fowell**

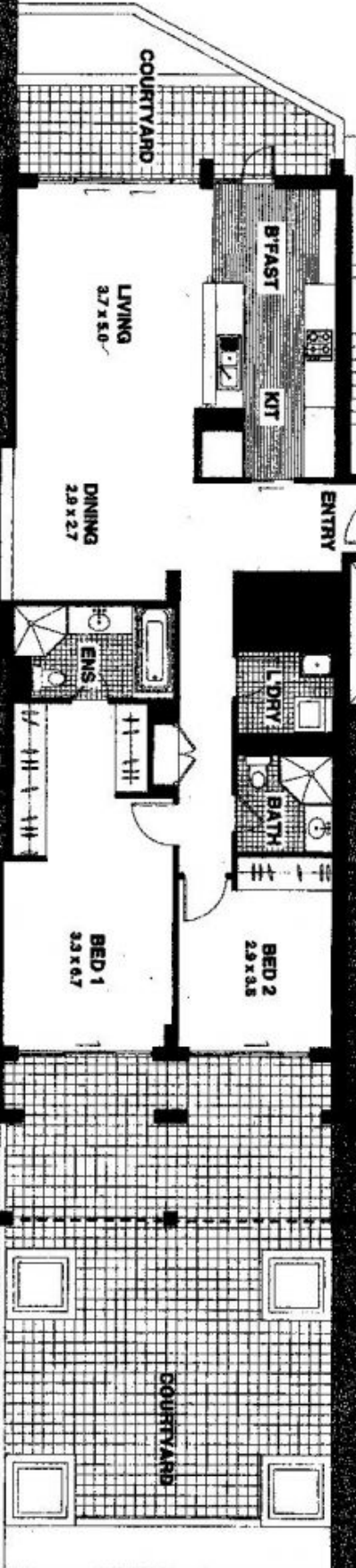
 0437 492 129

 sarah@morton.com.au

[morton.com.au](http://morton.com.au)



**APARTMENT 60**



**APARTMENT 75**