



morton.

Woolloomooloo 331/6 Cowper Wharf Roadway



Located at the northern end of the prestigious Finger Wharf this beautiful east facing one bedroom apartment is the perfect blend of peace and privacy.

- High ceilings with natural wharf beams
- Kitchen with granite bench tops, gas cooktop and dishwasher
- Cleverly designed bathroom, dual access
- Internal laundry with dryer
- Built-in wardrobes in bedroom
- Reverse cycle air conditioning
- 24 hour onsite security

View

As advertised or by appointment

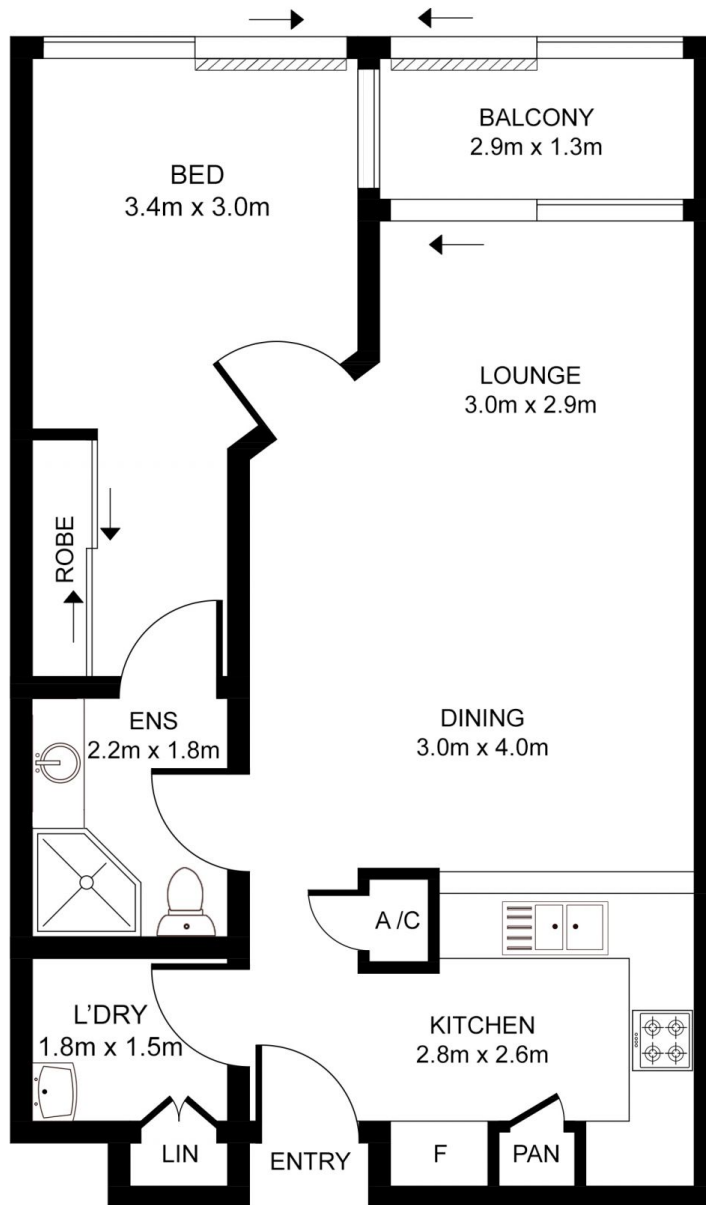
Agent

Sarah Fowell



sarah@morton.com.au

morton.com.au



All information contained herein is gathered from all sources we believe to be reliable. However we cannot guarantee its accuracy and interested parties should rely on their own enquiries.

