



morton.

Wentworth Point 101/2 The Piazza

 1  1  1

The Waterfront is located moments to Sydney Olympic Park main venues, train station, Bicentennial Park and Millennium Parklands. Located in Mykonos, this is your opportunity to move into this one bedroom ground level apartment, only a short stroll from The Promenade and The Piazza.

Apartment features:

- Private retreat located on level one
- Kitchen with plenty of cupboard space
- Stainless steel appliances and gas cooking
- Loads of natural light flowing into the living area
- Good size bedroom with built-in wardrobe and air conditioning
- Laundry room with clothes dryer
- Split system air conditioning in lounge and bedroom
- Single car space

View

As advertised or by appointment

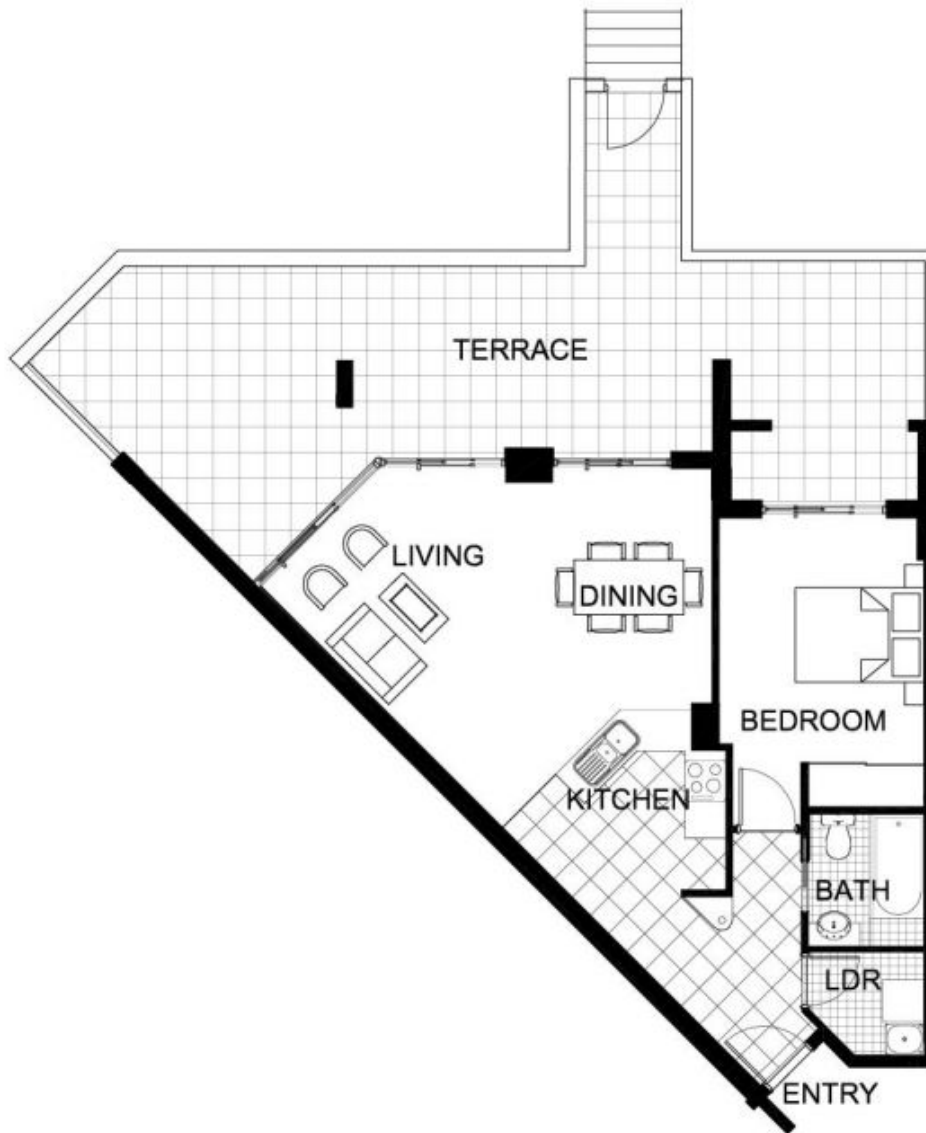
Agent

Morton

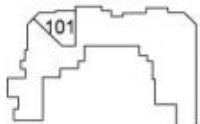


 info@morton.com.au

morton.com.au



The information contained herein is intended as an introduction to the general content of the project and is subject to variation. Interested parties should rely on their own enquiries and the contract for sale. The developer reserves the right to vary from these descriptions as it deems necessary or as any relevant authority may require.



THE WATERFRONT
AT HOMEBUSH BAY

1 BEDROOM

APARTMENT 101

TYPE C

INTERNAL AREA 56sqm

OUTDOOR AREA 43sqm

TOTAL AREA 99sqm

LEVEL 1

MYKONOS