



morton.

Newington 2 Healy Avenue

 3  2  2

Family buyers looking to move into a freshly appointed and low maintenance home in a premier part of Newington will be instantly impressed by this tastefully presented freestanding residence. Set in a whisper-quiet street, it offers a user-friendly two-storey design with many smart modern finishes, generous living spaces and a great indoor-outdoor layout for entertaining.

- Fresh modern interiors with separate formal and casual areas
- Easy level flow to a sunlit central courtyard and grassed garden
- Three air-conditioned bedrooms each have mirrored built-ins
- Large upstairs master with an ensuite and private balcony
- Well-appointed kitchen with sleek gas fittings and dishwasher
- Lock-up garage with internal access plus an extra car space
- Full main bathroom, downstairs guest WC and internal laundry
- Solar panels installed for energy and cost efficiency


View

As advertised or by appointment

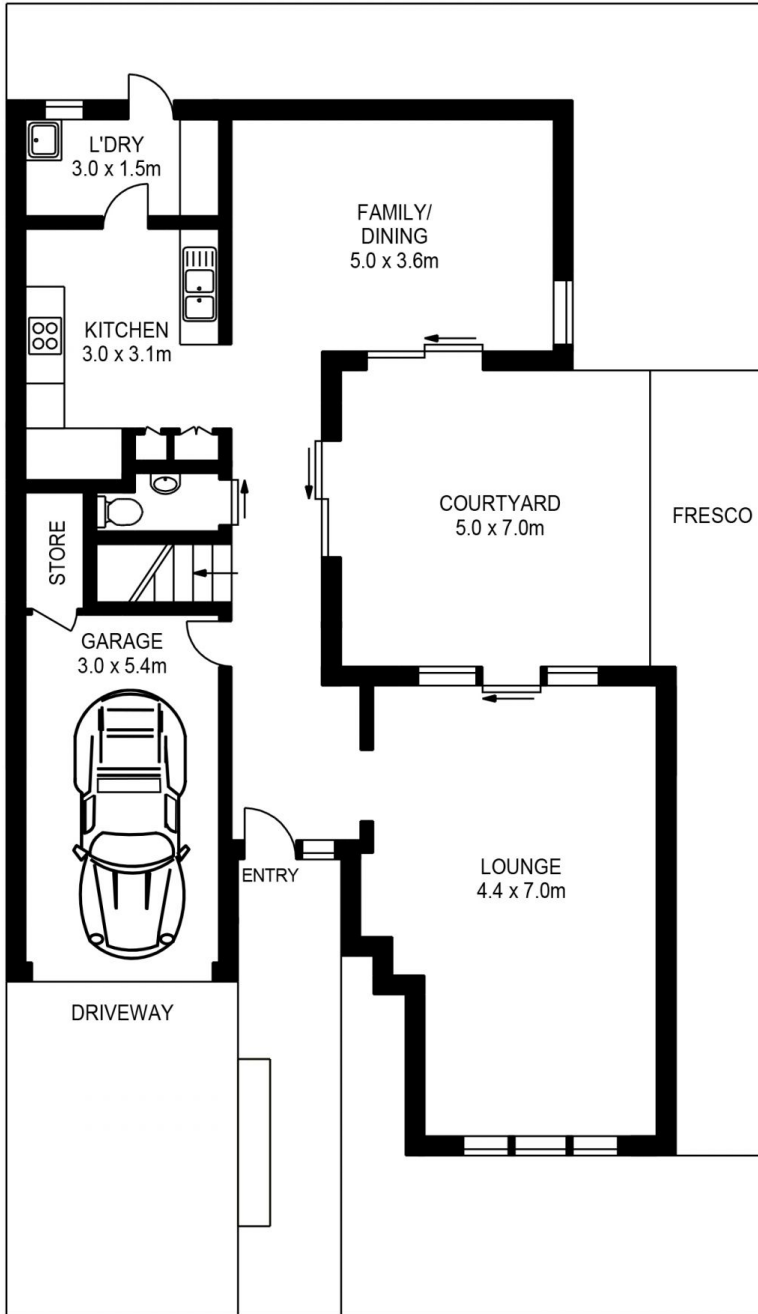
Agent

Dylan Choe

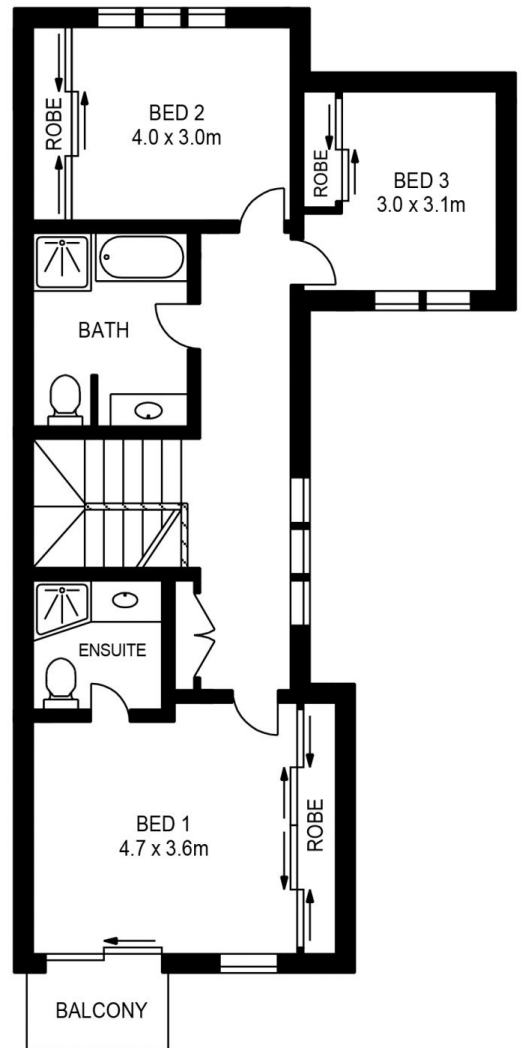
 0416 932 977

 dylanchoe@morton.com.au

morton.com.au



GROUND FLOOR



FIRST FLOOR

2 HEALY AVENUE, NEWINGTON

