



**morton.**

**Bondi Junction** 1705/253 Oxford Street



Located in the hub of Bondi Junction, Capitol offers resort-style apartment living with a private rooftop entertainment area and easy access to a lively Westfield, bus/train interchange and Bondi Beach.

- Reverse cycle air conditioning
- Stainless steel appliances
- Soft close kitchen draws and cupboards
- Stone bench tops, mirror splash back
- LED under cupboard lighting
- Timber floors, efficient LED down lights
- Data/TV points in living and main bedroom
- Recessed mirrored cabinets in bathroom
- Security building, video intercom

**View**

As advertised or by appointment

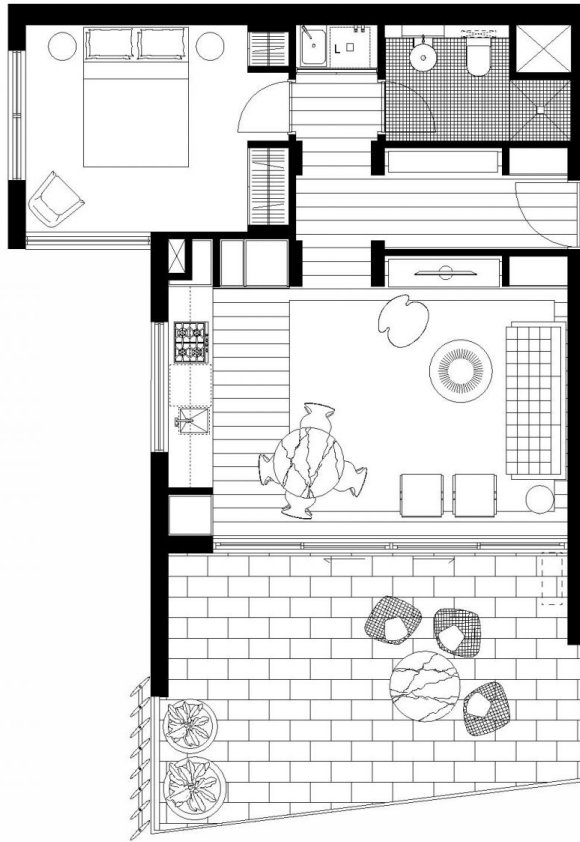
**Agent**

**George Reale**


📞 0408 014 469

✉️ [george@morton.com.au](mailto:george@morton.com.au)


[morton.com.au](http://morton.com.au)



Disclaimer: This plan is guide only and does constitute an offer or contract. If lease note changes may be made during the development and areas, fittings, fixtures and specifications are subject to change without notice in accordance with the terms of the contract of sale. All parties must rely on their own investigation to validate this information as it is not guaranteed. No liability will be accepted for any inaccuracy or misstatement.



**CAPITOL**  
BONDI JUNCTION

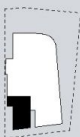


**LEVEL 16-18**

APT 16.05, 17.05, 18.05

**1 BED**

Internal area	50sqm
External area	22sqm
<b>Total</b>	<b>72sqm</b>



[www.capitolbondi.com.au](http://www.capitolbondi.com.au)

**1800 66 33 95**

