



# morton.

**Penrith** 906/81B Lord Sheffield Circuit

 2  2  1

Thornton Central apartments are located on the north side of Penrith train station with park and district views, some with water views towards the picturesque Blue Mountains, situated in the master-planned community Thornton Estate, offering convenient apartment living only metres to Penrith train station, Westfield shopping centre, local parks and quality restaurants and cafes.

This large north facing top floor unfurnished two bedroom plus study alcove apartment is a must see. It fills with ample natural light from floor to ceiling windows featured with scenic local and mountain's views.

- Top floor, North facing with beautiful Blue Mountains views.
- Separate wool-blend carpeted bedrooms with mirrored walk-in robes, each with ensuite, reverse-cycle air con, double roller blinds and a balcony.
- Timbered open living and dining area with reverse-cycle air con, flanked by the two bedrooms, study alcove area, efficient LED lighting throughout, filled with natural light from the floor

[morton.com.au](http://morton.com.au)

### View

As advertised or by appointment

### Agent

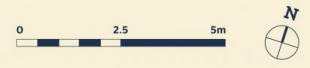
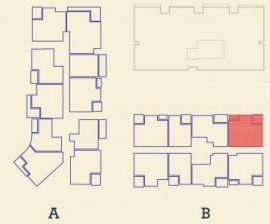
**David Lipman**

 0409 663 535

 david@morton.com.au

*Apartment*

2 BED- B 906



Internal	76 m <sup>2</sup>
External	8 m <sup>2</sup>
<b>Total</b>	<b>84 m<sup>2</sup></b>

DATE ISSUED 27/07/2015  
VERSION 02

Developed by St Hilliers FIRST POINT PROJECTS | Sales by LINK Home Land Direct [thorntoncentral.com.au](http://thorntoncentral.com.au)

**Disclaimer:** This floor plan has been prepared for marketing purposes only. All descriptions, dimensions, depictions and other details in this floor plan together, the "Information" may not be to scale. The vendor reserves the right to vary or amend the Information without notice. The Information may vary from the actual dimensions, layout and characteristics of the property as built. No third party has any authority whatsoever, either expressly or impliedly, to make or give any representation or warranty or to bind the vendor in connection with the information or the property.

**THORNTON**