



**morton.**

**Haymarket** S16.08/178 Thomas Street

 2  2  1

Situated in the heart of vibrant and bustling CBD, The Quay represents the best opportunity to enjoy the relaxed but sophisticated city living. It's an iconic building of two towers above two levels of retail, within short walking distance to Chinatown, Darling Harbour, U.T.S, Sydney Uni & Westfield shopping centre. Sitting at the northern-eastern corner on level 16, this apartment enjoys exceptional CBD views that stretch to the city skyline and beyond. It boasts large windows from every room bathed with sunlight and very generously portioned. Internal size 87sqm and balcony is 12sqm.

- Spacious bedrooms both with built in wardrobes
- Smart design study cove as a large home office area
- Gourmet granite gas kitchen with island bench
- Deluxe modern bathroom with floor to ceiling glass
- Reverse cycle air conditioning, video intercom
- Internal laundry with dryer, ensuite in main bedroom
- Secure parking space
- Unique podium garden landscape and recreation zone
- Stroll to the CBD, Market City, Darling Harbour and

**View**

As advertised or by appointment

**Agent**

**Morton**

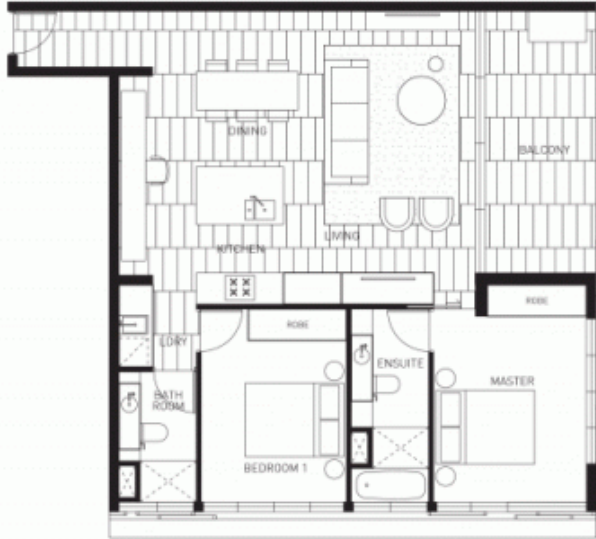


 [info@morton.com.au](mailto:info@morton.com.au)

**morton.com.au**

## TYPE 19B APARTMENTS

S2.08	S7.08	S11.08	S16.08
S3.08	S8.08	S12.08	S17.08
S5.08	S9.08	S13.08	S18.08
S6.08	S10.08	S15.08	



### AREA

Internal: 87m<sup>2</sup> Balcony: 12m<sup>2</sup>

SCALE	DWG NO	REV
1:100 @ A4	ID:225	C

### BUILDING



**Contact**  
1800 667 321  
[www.thequay.com.au](http://www.thequay.com.au)

**THE QUAY**  
MARKET

**CBRE**

This document has been prepared for marketing purposes only and may be subject to change. The Quay Haymarket, and other related companies do not warrant, confirm or represent, either expressly or impliedly, the accuracy or completeness of the information and illustrations contained in this document and do not accept any liability for any error or discrepancy in that information. All interested parties should make their own enquiries and consult their professional adviser for the accuracy of all the aspects of the information.