

morton.

Zetland 117/8 Victoria Park Parade

 3  2  1

This spacious split level three bedroom apartment is located in the sought-after building 'Platinum'. Located in the vibrant Victoria Park precinct, just 3km from the CBD, the as new Platinum development by Payce is sophisticated urban living at its best. Platinum's five buildings surround a beautifully landscaped 1,930sqm elevated garden incorporating an alfresco dining and barbecue area, intimate pavilions for relaxing and an Asian-inspired bamboo grove.

- Air conditioning throughout
- Modern gas kitchen with stainless steel appliances and dishwasher
- Large balcony with separate courtyard
- 2.5 bathrooms
- Internal laundry with dryer
- Close to Green Square Station and East Village shops
- State of the art health club featuring pool, gymnasium, steam and massage rooms

View

As advertised or by appointment

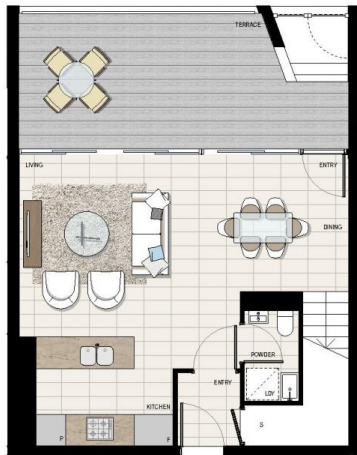
Agent

Sarah Fowell

 0437 492 129

 sarah@morton.com.au

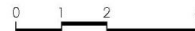
morton.com.au




LEVEL 1



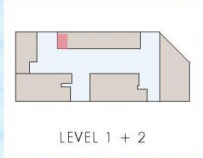
LEVEL 2




Disclaimer: This floor plan has been prepared for marketing purposes only. All descriptions, dimensions, depictions and other details in this floor plan may not be to scale and may vary to the property as built. No third party has any authority to make or give any representation or warranty in relation to the property. Your attention is drawn to the special conditions of the contract for sale. **Date Issued: 26/10/12 Revision: E**


PLATINUM
 BY PAYCE
 APARTMENT
117
 3 BEDROOM

INTERNAL	120 SQM
EXTERNAL	36 SQM
TOTAL	156 SQM


 LEVEL 1 + 2

PROUDLY DEVELOPED BY


PAYCE

1300 778 777
 platinumbypayce.com.au