



morton.

Wentworth Point A503/1 Burroway Road



Jewel is set to be the new and iconic gateway that connects the Sydney Harbour to Wentworth Point. Ideally positioned at the northern tip of the peninsular, Jewel is opposite to the ferry wharf, bus stops and rests above the Pierside retail precinct that includes restaurants, health care, beauty and an IGA supermarket.

- Entertainers gas kitchen with stone/Corian benchtops, soft closing cupboards
- LED lighting, split system reverse cycle air conditioning
- Open living and dining with timber look ceramic tiles
- Lounge room with gas point and MATV and payTV points
- Wool-blend carpeted bedrooms, mirrored built-in robes
- Internal laundry with dryer, audio intercom with security and lift access
- Bathroom/ensuite with ceramic wall and floor tiles, mirrored vanity cabinet
- Large covered balcony with gas point for BBQ
- Basement secure parking

View

As advertised or by appointment

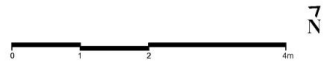
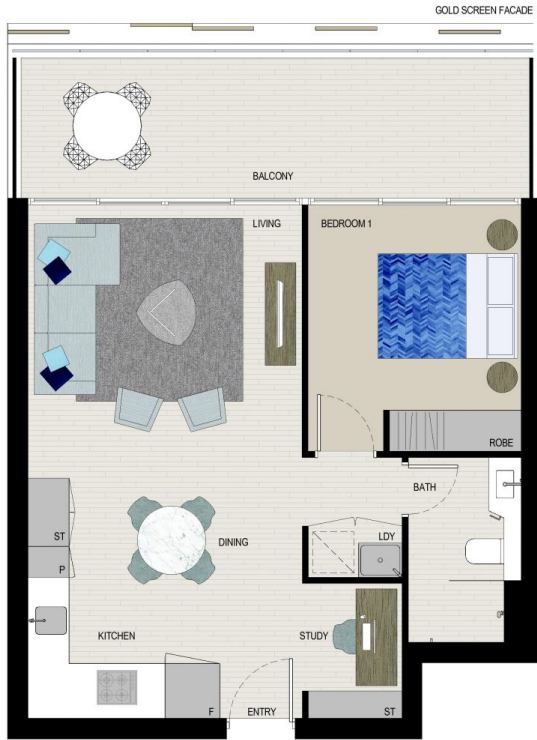
Agent

Morton RE



rentals@morton.com.au

morton.com.au



JOINTLY DEVELOPED BY



Disclaimer: This floor plan has been prepared for marketing purposes only. All descriptions, dimensions, depictions and other details in this floor plan may not be to scale and may vary from the property as built. Your attention is drawn to the special conditions of the contract for sale of land. No third party has any authority to make or give any representation or warranty in relation to the property unless the representation or warranty is confirmed by Payce Communities Wentworth Point Pty Ltd, 561 FWT Development Pty Ltd and included in the contract for sale of land. SCPA Disclaimer: In this disclaimer, Developer means Payce Communities Wentworth Point Pty Ltd, ACN 604 420 744 and 561 FWT Development Pty Ltd, ACN 164 281 145. Development means the retail and residential development at Burroway Road Wentworth Point known as Jewel. SCPA means Sydney Olympic Park Authority, a statutory body constituted under the Sydney Olympic Park Authority Act 2002 (NSW). The Developer is responsible for all matters in connection with undertaking and completing all of the works required to be performed or carried out to complete the Development and SCPA has no responsibility or involvement in those matters.

SALES BY



(Rev C_01.06.15)



JEWEL

WENTWORTH POINT

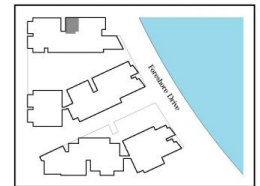
APARTMENT

503

LOT 30

1BED + STUDY

Internal	52 sqm
External	15 sqm
Total	67 sqm



LEVEL 5

JEWEL DISPLAY CENTRE

1 Burroway Road, Wentworth Point 2127

◆ 1300 888 778 ◆ jewelresidences.com.au