



# morton.

**Penrith** 532/1-39 Lord Sheffield Circuit

 1  1  1

Located in the hub of North Penrith, Harts Landing apartments are high quality, unfurnished and offer contemporary urban living in a master planned vibrant community called Thornton Estate. Only metres from Penrith train station, Westfield shopping centre and local parks.

#### Features

- Covered balcony, southwest facing with Blue Mountains views
- Tiled open living and dining area, efficient LED lighting throughout
- Filled with natural light from the floor to ceiling windows
- Reverse cycle air conditioning, block-out roller blinds throughout
- Stylish kitchen with stone bench-tops, soft close drawers & cupboards
- Four burner stove top, stainless steel dishwasher, microwave and oven
- Wool-blend carpeted bedrooms with mirrored built-in robes
- Master with walk-in robe and quality en-suite


[morton.com.au](https://morton.com.au)

#### View

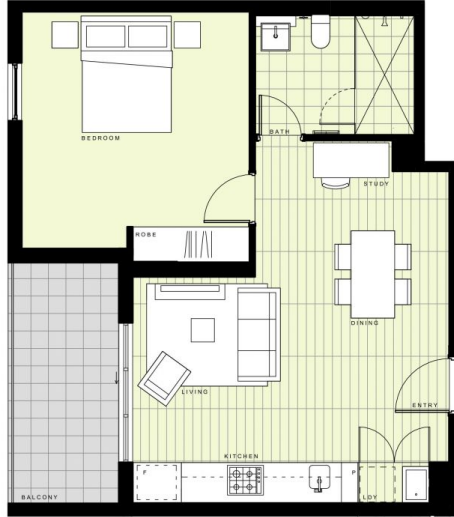
As advertised or by appointment

#### Agent

**David Lipman**

 0409 663 535

 david@morton.com.au



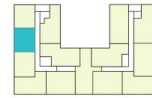
## BUILDING A

### LEVEL 5

#### APARTMENT A532 LOT 59

1 BEDROOM + STUDY

INTERNAL AREA	51m <sup>2</sup>
EXTERNAL AREA	7m <sup>2</sup>
<b>TOTAL</b>	<b>58m<sup>2</sup></b>



Disclaimer: This floor plan has been prepared for marketing purposes only. All descriptions, dimensions, depictions and other details in this floor plan may not be to scale and may vary from the property as built. Your attention is drawn to the special conditions of the contract for sale of land. No third party has any authority to make or give any representation or warranty in relation to the property unless the representation or warranty is confirmed by the vendor and included in the contract for sale of land. Revised floor plans - 14.08.18

**CALL 1300 548 588**  
**HARTSLANDING.COM.AU**  
 LORD SHEFFIELD CIRCUIT, PENRITH  
**LINK DISPLAY SUITE**  
 22 GADIGAL AVENUE, ZETLAND

PROUDLY DEVELOPED BY **PAYCE** SALES BY **LINK**