



morton.

Riverwood 422/5 Vermont Crescent

 2  2  1

This bright and ultra-modern apartment represents a great chance to buy into Washington Park's popular 'Lakeview' building and enjoy the development's lakeside setting amid acres of park-like grounds. Instantly appealing thanks to its stylish presentation and quality design, it offers a high performing property in mint condition surrounded by all the attractions of this celebrated masterplanned community.


- A good-sized open plan layout with living and dining areas
- A wide covered balcony that overlooks landscaped gardens
- Designer stone kitchen equipped with sleek gas fittings
- Two double bedrooms with built-ins plus a separate study
- Two crisp modern bathrooms and an internal laundry
- Security car space and air conditioning
- Access to cycleways, scenic walkways, communal gardens

View

As advertised or by appointment

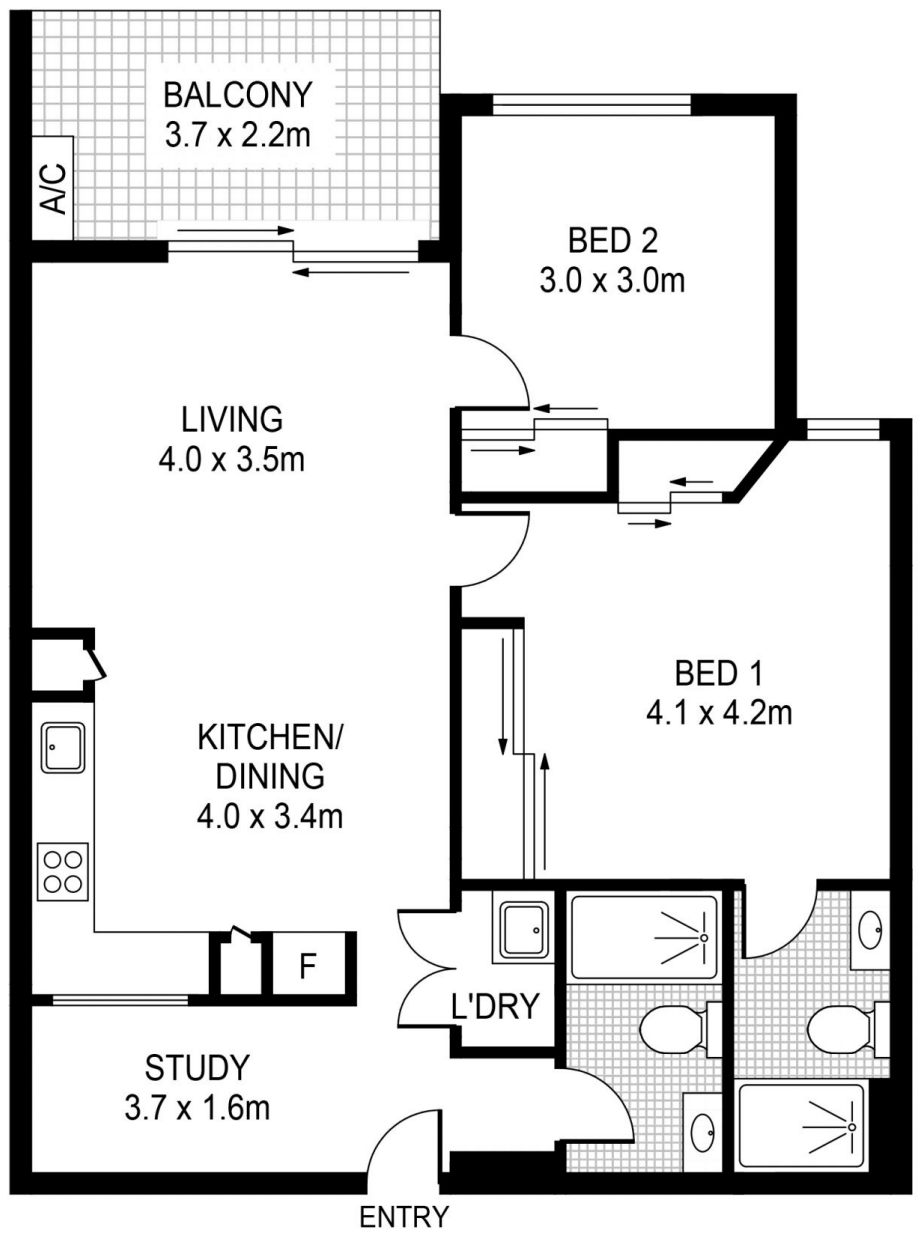
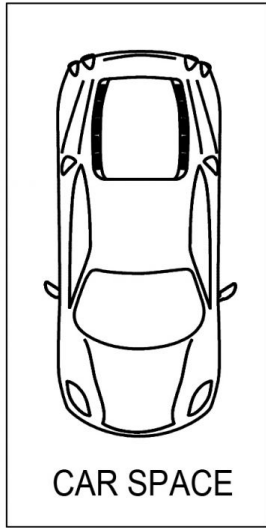
Agent

Calvin Chan

 0406 888 028

 calvin@morton.com.au

morton.com.au



422 /5 VERMONT CRES, RIVERWOOD

