



morton.

Wentworth Point 680/33 Hill Road

 1  1  1

Light filled throughout and capturing leafy park views over the complex's landscaped grounds, this fresh and bright security apartment offers a private retreat that's central to all the attractions that make Wentworth Point such a popular lifestyle community. The property is set within the boutique 'Palermo' building and is even further enhanced by its elevated 6th floor position that enjoys good natural light and excellent privacy.

- Open plan layout with air-conditioned living and dining area
- Extra-large entertainment balcony with elevated district views
- Double bedroom with built-in wardrobe and balcony access
- Sleek modern kitchen with breakfast bar and gas appliances
- Designer bathroom, internal laundry and good built-in storage
- Security car space plus exclusive access to the gym and pool
- Only a short stroll to The Promenade and The Piazza


View

As advertised or by appointment

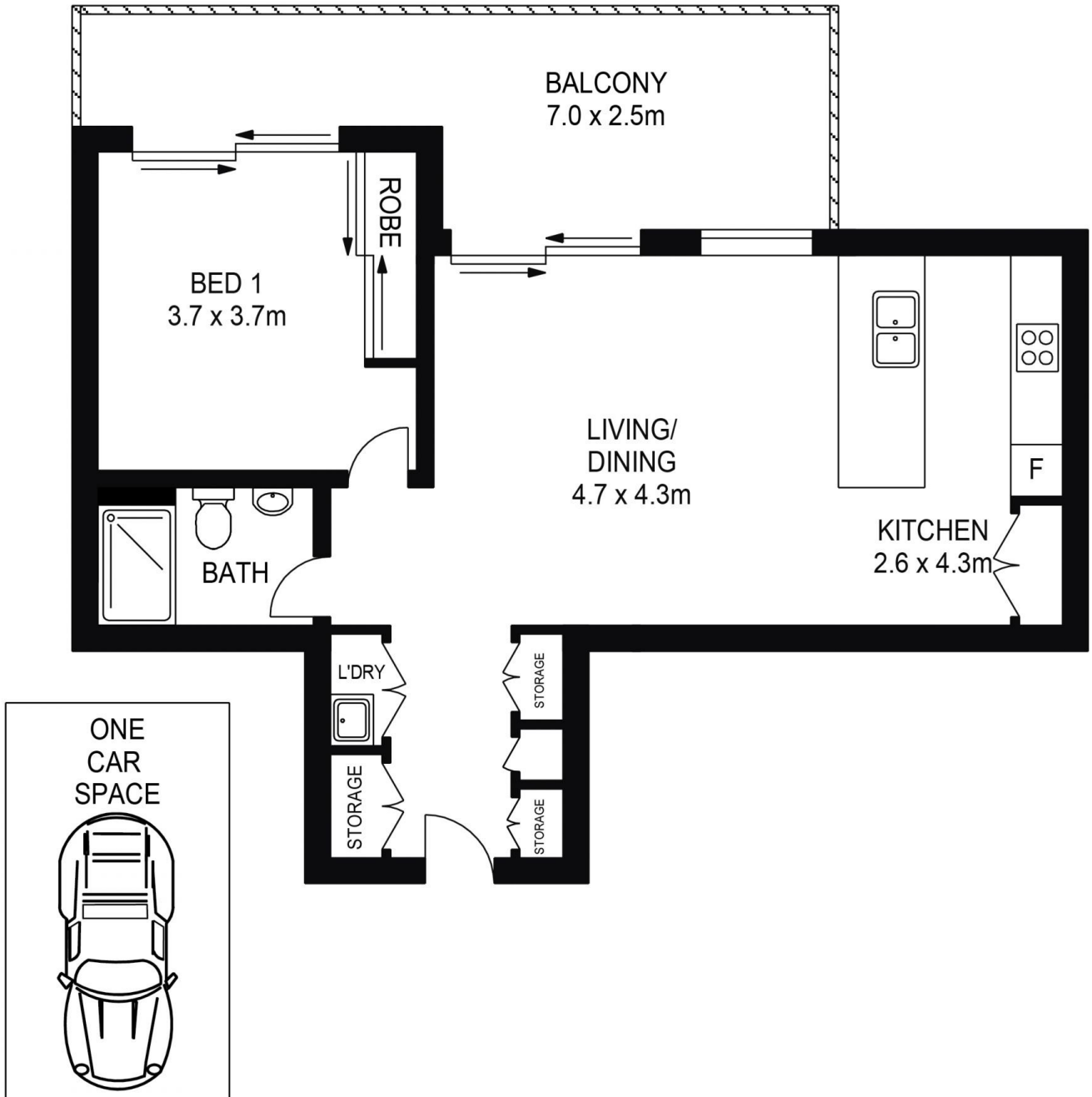
Agent

Dylan Choe

 0416 932 977

 dylanchoe@morton.com.au

morton.com.au



680/33 HILL ROAD, WENTWORTH POINT



Please note these measurements are approximate only. The plans are intended as a rough guide for illustrative purposes. It is not warranted or guaranteed to be correct nor is it a part of the sale or rental contract.

