



**morton.**

**Wentworth Point** 306/1 Burroway Road

 2  2  1

A superb waterside lifestyle is on offer in the exclusive 'Jewel' waterfront development, proudly introducing this stylishly designed two-bedroom apartment. Quietly positioned in the complex on the edge of the Parramatta River and near the ferry wharf, it makes an instant impact with its clever modern design that takes full advantage of the convenience, space and gorgeous leafy outlooks from the communal garden.

- Perfectly located with the ferry wharf right at the front door
- Generous open plan layout featuring living and dining areas
- Light, open and airy interiors feature cool polished flooring
- Wide entertainment balcony overlooking landscaped grounds
- Contemporary kitchen with stainless steel gas appliances
- Two double bedrooms both have custom built-in wardrobes
- Designer ensuite, main bathroom, plus separate internal laundry
- Security basement car space and lock-up storage cage


**View**

As advertised or by appointment

**Agent**

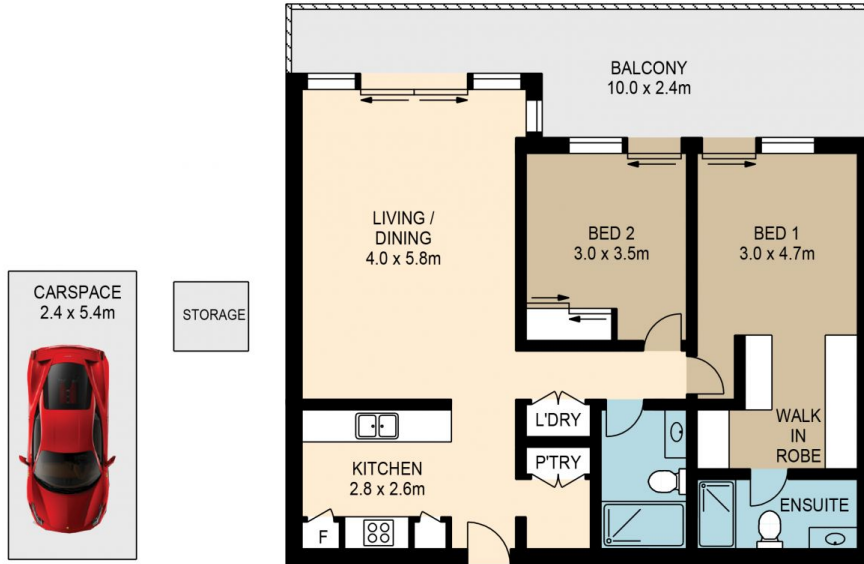
**Dylan Choe**

 0416 932 977

 [dylanchoe@morton.com.au](mailto:dylanchoe@morton.com.au)

**morton.com.au**

30/61 BURROWAY ROAD, SYDNEY OLYMPIC PARK



 ASSET PHOTOGRAPHERS  
www.assetphotographers.com.au

Please note these measurements are approximate only. The plans is intended as a rough guide for illustrative purpose. It is not warranted or guaranteed to be correct nor it is part of the sale or rental contract

