



# morton.

**Penrith** 410/81A Lord Sheffield Circuit

 2  2  1

Located in the hub of North Penrith, Thornton offers convenient apartment living in a master planned community only metres from the Penrith rail hub, Westfield shopping centre and local parks.


- Entertainers kitchen with stone benchtops, soft close cupboards
- Four burner stove top with stainless steel appliances, dishwasher
- LED lighting, large covered balcony, reverse cycle air conditioning
- Open living and dining with engineered timber flooring
- Wool-blend carpeted bedrooms, mirrored built-in robes
- Audio intercom with security and lift access
- Quality bathroom/ensuite with mirrored vanity cabinet
- Basement secure parking, some with a storage cage
- On-site building manager, common landscaped courtyard

### View

As advertised or by appointment

### Agent

**Anthony Fleming**

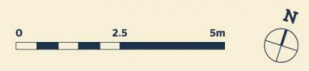
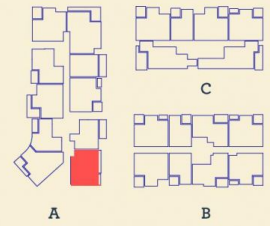
 0437 929 484

 [anthonyf@morton.com.au](mailto:anthonyf@morton.com.au)

[morton.com.au](http://morton.com.au)

*Apartment*

2 BED- A 410



Internal	75 m <sup>2</sup>
External	10 m <sup>2</sup>
<b>Total</b>	<b>85 m<sup>2</sup></b>

DATE ISSUED 27/07/2015  
VERSION 02

Developed by **St Hilliers** **FIRST POINT PROJECTS** | Sales by **LINK** **Home Land Direct** [thorntoncentral.com.au](http://thorntoncentral.com.au)

**Disclaimer:** This floor plan has been prepared for marketing purposes only. All descriptions, dimensions, depictions and other details in this floor plan (together, the "Information") may not be to scale. The vendor reserves the right to vary or amend the Information without notice. The Information may vary from the actual dimensions, layout and characteristics of the property as built. No third party has any authority whatsoever, either expressly or impliedly, to make or give any representation or warranty or to bind the vendor in connection with the information or the property.

**THORNTON**