



morton.

Wentworth Point 565/3 Baywater Drive

 2  2  1

Located in Palermo at The Waterfront, here is your opportunity to move into this very neat two bedroom apartment. A short stroll to The Piazza, local restaurants, convenience store, pharmacy, public transport off Hill Road and ferry service to Parramatta and City CBD. The Waterfront is located moments to Sydney Olympic Park main venues and train station, Bicentennial Park and Millennium Parklands.

- Northerly aspect with large balcony
- Separate living area
- Split system air conditioning
- Generous size bedrooms with built ins
- Spacious modern kitchen
- Stone bench tops, stainless steel appliances and gas cooking
- Audio visual intercom
- Separate internal laundry with dryer
- Single car space with a storage cage

View

As advertised or by appointment

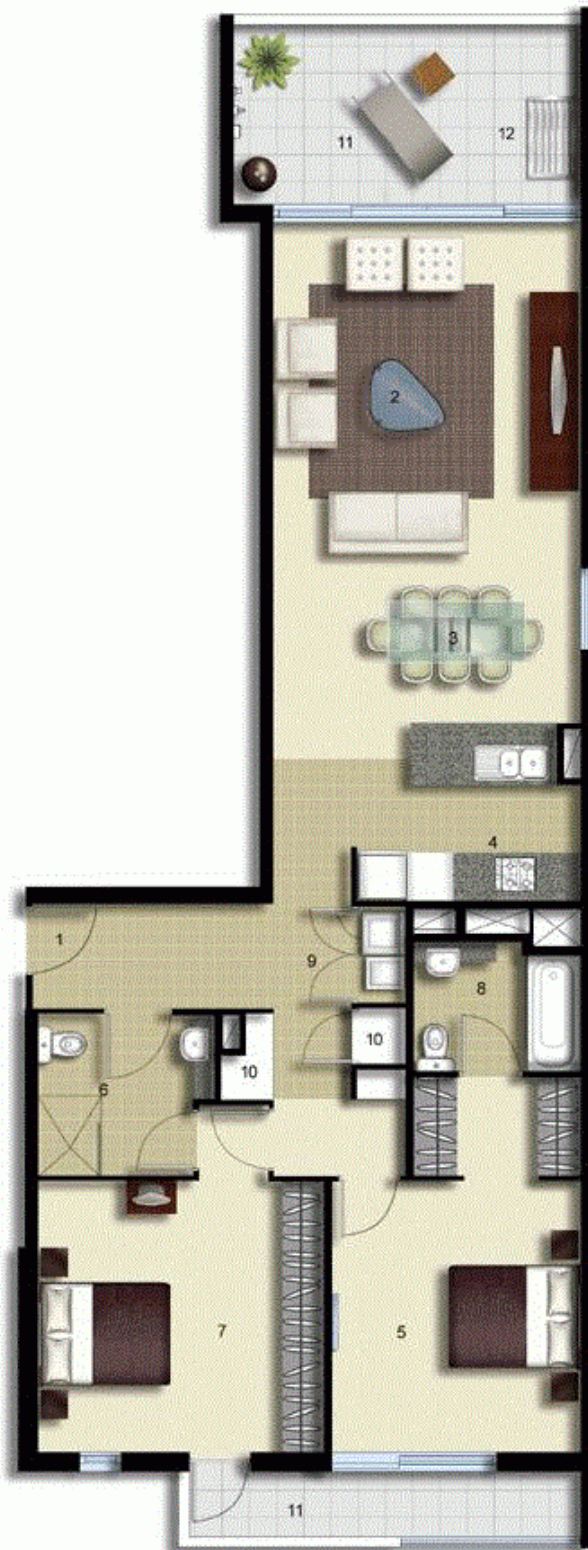
Agent

Morton RE



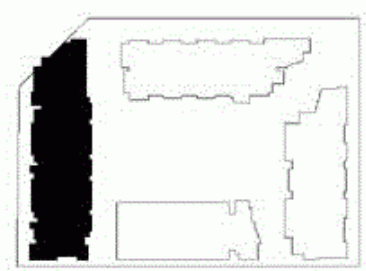
 rentals@morton.com.au

morton.com.au



- ENTRY 1
- LIVING 2
- DINING 3
- KITCHEN 4
- MAIN BEDROOM 5
- BATHROOM 6
- BEDROOM 2 7
- ENSUITE 8
- LAUNDRY 9
- LINEN 10
- TERRACE 11
- CLOTHES DRYING 12

LEVEL 05



PALERMO

UNIT: **565**

TYPE: 2 Bedroom

UNIT AREA: 109.0 sqm

OUTDOOR AREA: 18.0 sqm



Disclaimer: All layouts are indicative only, and subject to change.