



**morton.**

**Penrith** 926/1-39 Lord Sheffield Circuit

 2  2  1

Begin your home ownership dream in style and be the first to experience all the space, quality and lifestyle benefits of this spacious executive apartment. Positioned within Thornton Estate's recently completed Harts Landing complex and capturing spectacular mountain and district panoramas, the smartly appointed residence is ideally suited to those seeking a sleek designer living space in mint condition with low maintenance appeal.

- Ideal top floor position that takes full advantage of the outlook
- North-east aspect with 180-degree views to the mountain ranges
- Crisp and fresh interiors feature a light filled open design
- Large balcony perfect for entertaining
- Quality kitchen equipped with sleek appliances
- Beautiful timber floor tiles in living and high traffic areas
- Security basement car space, lock-up storage cage on title
- Access to the community playground and BBQ facilities

**View**

As advertised or by appointment

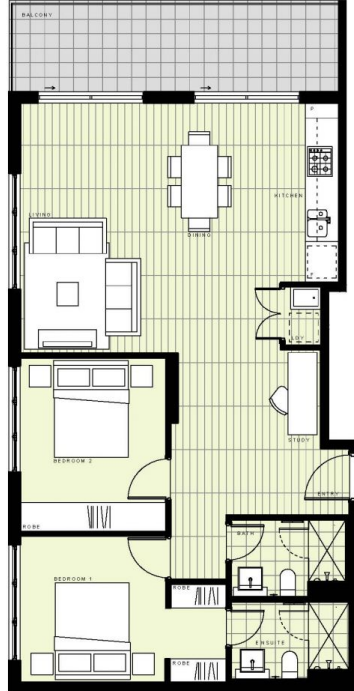
**Agent**

**Ian Ahearn**

 0457 483 610

 [ian.ahearn@morton.com.au](mailto:ian.ahearn@morton.com.au)

**morton.com.au**



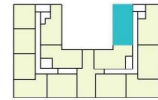
## BUILDING A

### LEVEL 9

#### APARTMENT A926 LOT 109

2 BEDROOM + STUDY

INTERNAL AREA	78m <sup>2</sup>
EXTERNAL AREA	11m <sup>2</sup>
<b>TOTAL</b>	<b>89m<sup>2</sup></b>



Disclaimer: This floor plan has been prepared for marketing purposes only. All descriptions, dimensions, depictions and other details in this floor plan may not be to scale and may vary from the property as built. Your attention is drawn to the special conditions of the contract for sale of land. No third party has any authority to make or give any representation or warranty in relation to the property unless the representation or warranty is confirmed by the vendor and included in the contract for sale of land. Revised floor plans - 14/03/16

CALL 1300 546 588  
[HARTSLANDING.COM.AU](http://HARTSLANDING.COM.AU)  
 LORD SHEPPHELD CIRCUIT, PENRITH  
 LINK DISPLAY SUITE  
 22 GADIGAL AVENUE, ZETLAND

PROUDLY DEVELOPED BY **PAYCE** SALES BY **LINKK**