



# morton.

**Wentworth Point** 442/25 Bennelong Parkway

 2  2  1

Located in Positano at The Waterfront, here is your opportunity to move into this spacious two bedroom apartment. A short stroll to The Piazza, local restaurants, convenience store, pharmacy, public transport off Hill Road and ferry service to Parramatta and City CBD. The Waterfront is located moments to Sydney Olympic Park main venues and train station, Bicentennial Park and Millennium Parklands.

Apartment features:

- Combined living room flowing onto balcony
- Full size kitchen with plenty of cupboard space
- Stainless steel appliances
- Main bedroom with en-suite
- Laundry room and clothes dryer
- Single security undercover car space.

**View**

As advertised or by appointment

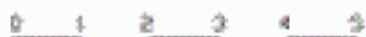
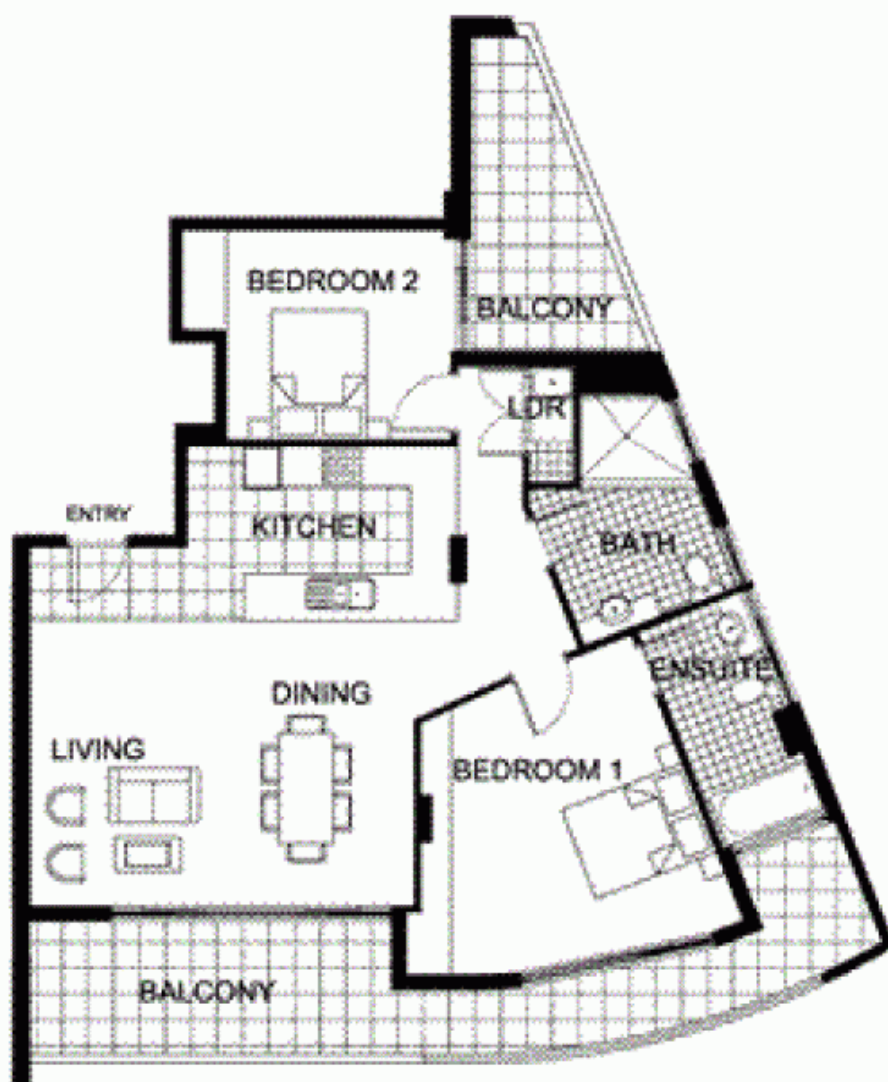
**Agent**

**Morton RE**



 rentals@morton.com.au

[morton.com.au](http://morton.com.au)



"The information contained herein is intended as an introduction to the general contents of the project and is subject to variation. Interested parties should rely on their own enquiries and the contract for sale. The developer reserves the right to vary from these descriptions as it deems necessary or as any relevant authority may require."



**THE WATERFRONT**  
AT HOWERSHAY BAY



**2 BEDROOM**

**APARTMENT 442(Exist No.4.506)**

INTERNAL AREA 85 sqm

OUTDOOR AREA 24 sqm

TOTAL AREA 109 sqm



LEVEL 4.5

**POSITANO**