



morton.

Wentworth Point 209/4 The Piazza

 2  2  1

Located in Santorini at The Waterfront, here is your opportunity to move into this two bedroom apartment. A short stroll to The Piazza, local restaurants, convenience store, pharmacy, public transport off Hill Road and ferry service to Parramatta and City CBD. The Waterfront is located moments to Sydney Olympic Park main venues and train station, Bicentennial Park and Millennium Parklands.

- Second floor apartment
- Split system air-conditioning
- Stainless steel appliances and gas cooking.
- Generous size separate living and dining areas
- Good size bedrooms with built-in wardrobes
- Two balconies, laundry room and clothes dryer
- Single lock up garage

View

As advertised or by appointment

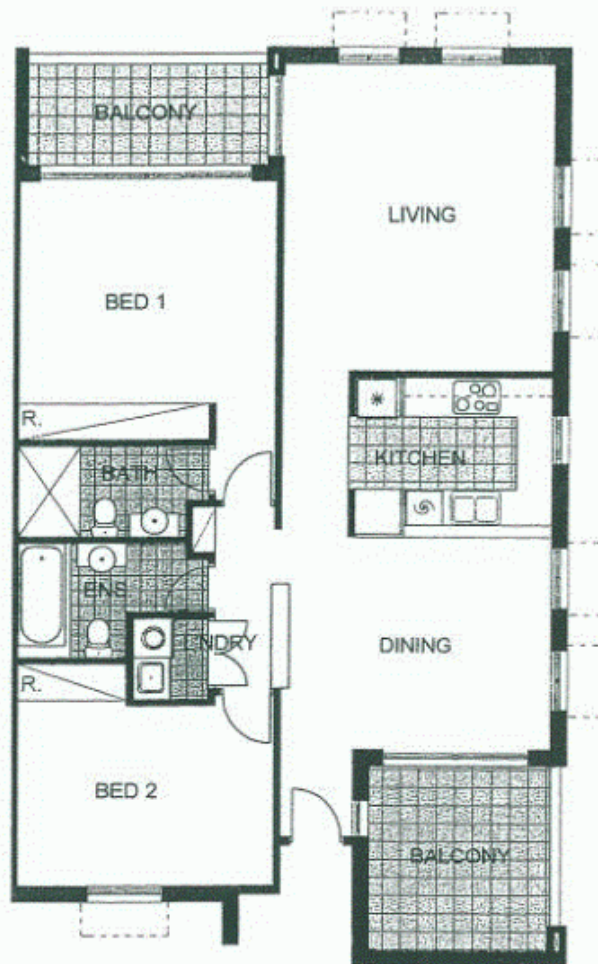
Agent

Morton RE



 rentals@morton.com.au

morton.com.au



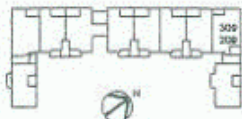
*The information contained herein is intended as an introduction to the general content of the project and is subject to variation. Interested parties should rely on their own enquiries and the contract for sale. The developer reserves the right to vary from these descriptions as it deems necessary or as any relevant authority may require.



2 BEDROOM

APARTMENT 209,309

TYPE-F



INTERNAL AREA=111 m²

OUTDOOR AREA= 15 m²

TOTAL AREA= 126 m²

LOT 14

SANTORINI