



# morton.

**Chippendale** 302/30 Buckland Street

 2  1  1

Perfectly placed on the top floor of one of the area's most tightly held warehouse conversions, this beautifully renovated City fringe home offers generous proportions, privacy and abundant appeal. Maintaining the feel of its original 1900 era, the stunning revamp provides a contemporary ambiance. Ideally located in a thriving precinct, stroll to surrounding universities, local eateries and Broadway Shopping.

Features include:

- a superb 101 sqm. floor plan, a very spacious layout
- provides a welcoming entry foyer,
- a chic kitchen featuring CaesarStone benchtop
- open plan living and dining that flows to a covered outdoor terrace
- two lavish bedrooms offer wall to wall built in robes
- master bedroom has ample space for a study or lounging area
- modern bathroom
- separate laundry room
- secure car space, timber flooring

[morton.com.au](http://morton.com.au)

**View**

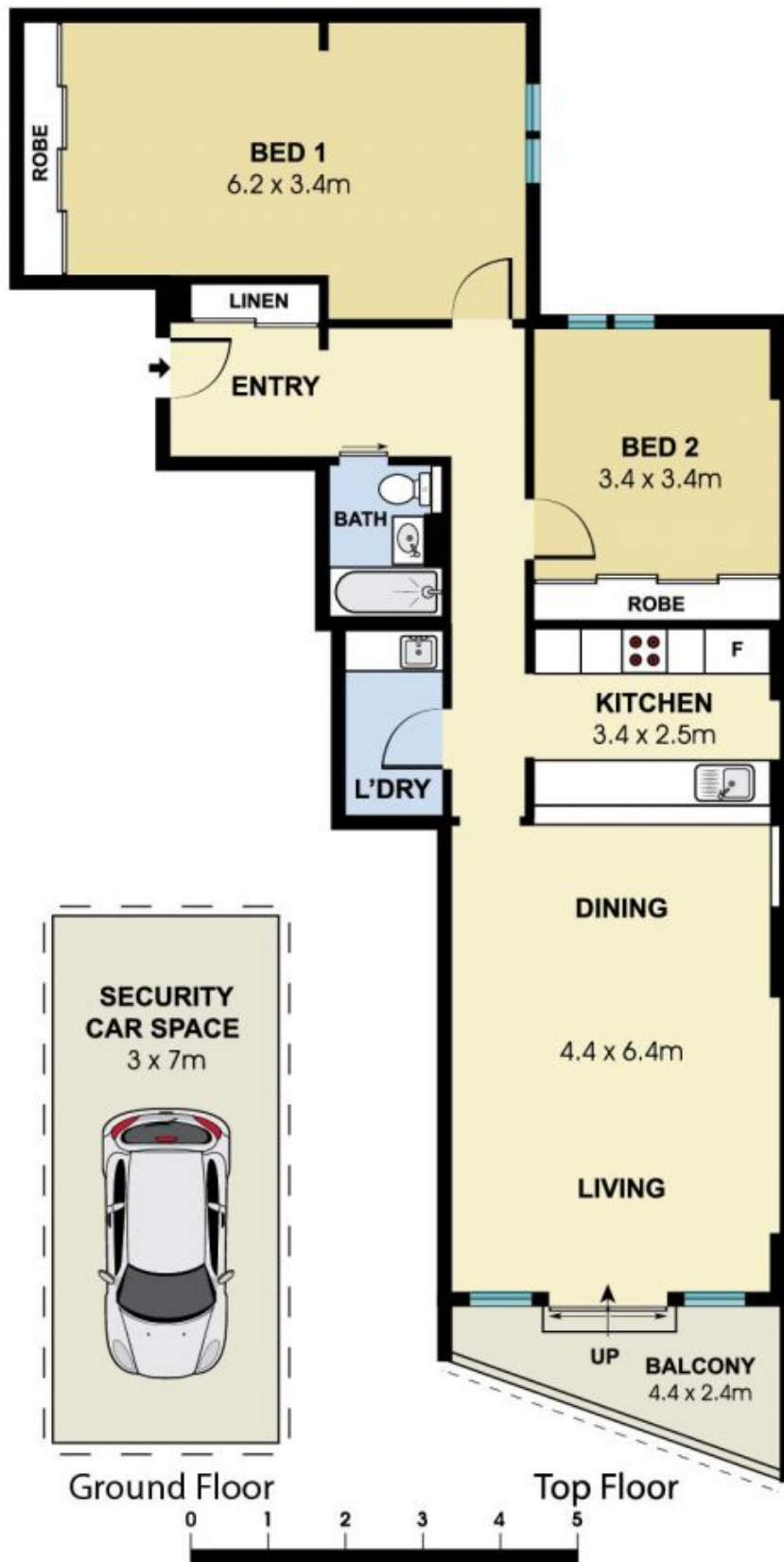
As advertised or by appointment

**Agent**

**George Reale**

 0408 014 469

 [george@morton.com.au](mailto:george@morton.com.au)



302/30 Buckland Street, Chippendale

Scale in metres. Indicative only. Dimensions are approximate. All information contained here in is gathered from sources we believe to be reliable. However we cannot guarantee its accuracy and interested persons should rely on their own enquiries.