



# morton.

**Wentworth Point** 285/33 Hill Road

 2  2  1

Bathed in the natural light of a western aspect and embracing superb leafy views across the treetops, this impressive residence presents a lifestyle of undeniable quality and substance. Private and peaceful, it is little more than a short walk to parks, transport and community amenities.

- Designed for effortless indoor/outdoor entertaining
- With a spacious open plan lounge and dining area
- Double bedrooms, master has ensuite and built-ins
- Huge study, gas kitchen with CaesarStone benches
- Large sun-washed balcony is perfect for BBQ dining
- Air con, storeroom, facilities include pools and gyms

### View

As advertised or by appointment

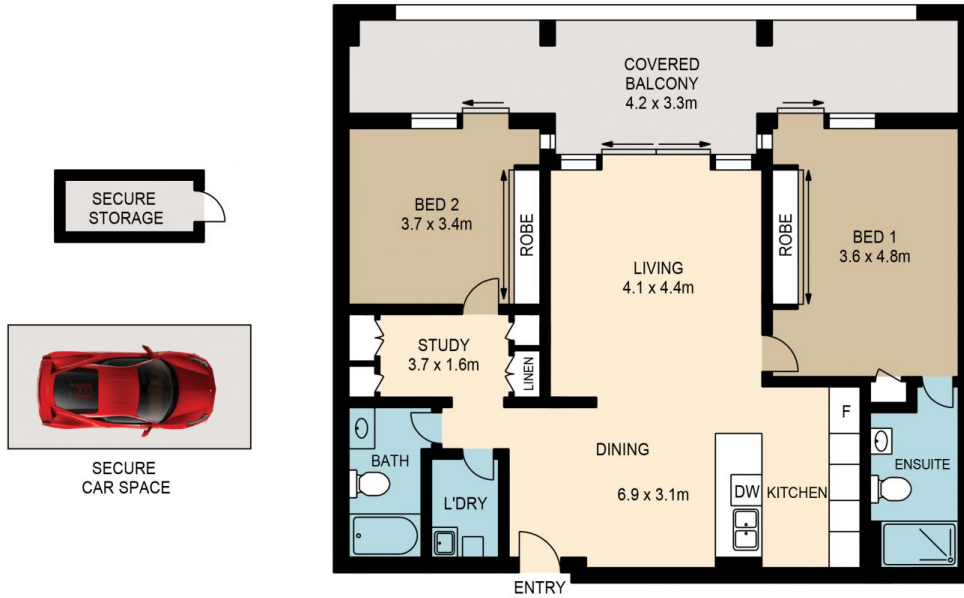
### Agent

**Morton RE**

 [rentals@morton.com.au](tel:)

[morton.com.au](http://morton.com.au)

UNIT 285/33 HILL ROAD, WENTWORTH POINT



 ASSET PHOTOGRAPHERS  
www.assetphotographers.com.au

Please note these measurements are approximate only. The plans are intended as a rough guide for illustrative purpose. It is not warranted or guaranteed to be correct nor is it part of the sale or rental contract

