



morton.

Zetland 24/106 Joynton Avenue

 1  1  1

Located in the vibrant Victoria Park precinct, just 3km from the CBD, this spacious 1 bedroom apartment comes available as a rare opportunity in the even popular ECO building.

- Huge living room and dining areas with leafy aspect
- Large sunny balcony facing to beautiful common garden
- Total size 74 sqm with east/north aspect
- Double sized bedroom with built-in wardrobes
- Gas kitchen with island bench and ample pantry storage
- Well designed study nook as extra place as home office
- Modern full tiled bathroom with bath tub
- Internal laundry with dryer
- Security building, intercom access

View

As advertised or by appointment

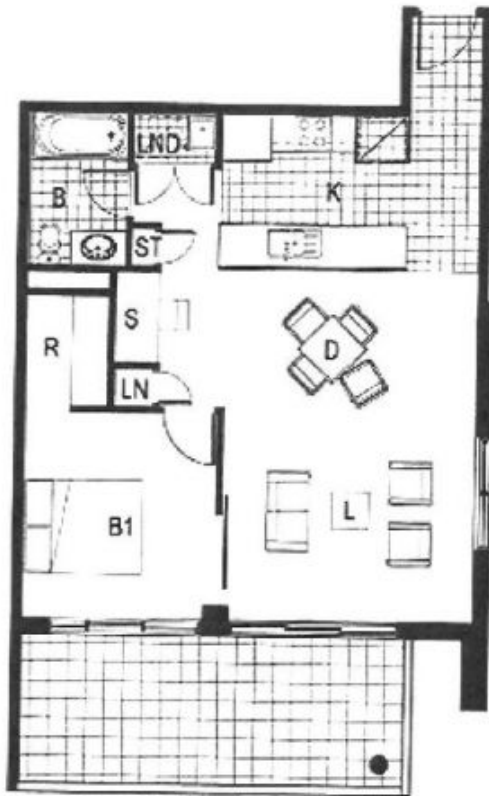
Agent

Sarah Fowell

 0437 492 129

 sarah@morton.com.au

morton.com.au



6W.2.04

internal area 59 sqm
external area 15 sqm



0 1 2 3M

Date: 19.08.02 issue h

THE AREAS NOTED ABOVE ARE INDICATIVE ONLY. DISTANCES SHOULD BE MADE TO THE DRAFT STRUCTURE PLAN.

