



# morton.

**Wentworth Point** 126/23 Savona Drive

 1  1  1

This delightful split-level courtyard apartment represents a fantastic lifestyle opportunity. Offering direct street access, well-proportioned rooms and high ceilings, this is a must to inspect. Features include:

- Open lounge and kitchen space flowing out to courtyard
- Good sized bedroom with built-in wardrobes
- Gas cooking + stainless steel appliances
- Split-system air conditioning in the living area
- Courtyard with street access
- Secure parking and separate storage cage

### View

As advertised or by appointment

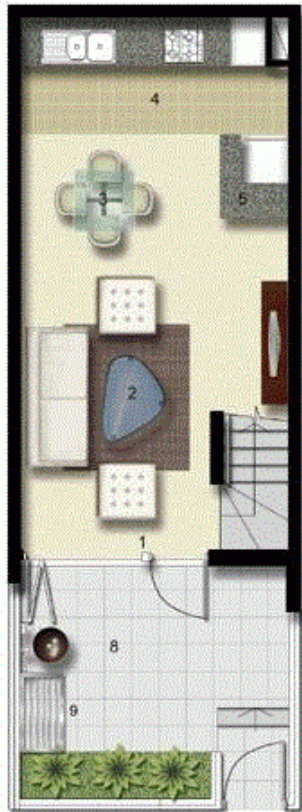
### Agent

**Morton RE**

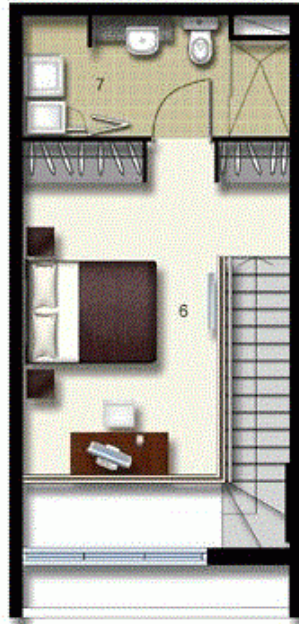


 rentals@morton.com.au

[morton.com.au](http://morton.com.au)



LEVEL 01



LEVEL 02

- ENTRY 1
- LIVING 2
- DINING 3
- KITCHEN 4
- STORAGE 5
- MAIN BEDROOM 6
- ENSUITE LAUNDRY 7
- TERRACE 8
- CLOTHES DRYING 9



# PALERMO

UNIT: **126**

TYPE: 1 Bedroom

UNIT AREA: 61.0 sqm

OUTDOOR AREA: 13.0 sqm



Disclaimer: All layouts are indicative only, and subject to change.

ALLEN JACK+COTTIER



0 2.5 5M