



# morton.

**Riverwood** 132/5 Vermont Crescent

 1  1  1

Located in "Lakeview", the latest stage of Washington Park, this fantastic apartment offers a brand new lifestyle in a beautiful, quiet and master planned community. With easy access to the M5 and only 20kms to the CBD. These apartments represent the upper echelon of apartment living.

#### APARTMENT FEATURES

- Reverse cycle air conditioning
- Stainless steel kitchen appliances
- Stone bench tops, mirror splash backs
- Wool carpets, efficient LED down lights
- Data/TV points in living and main bedroom
- Recessed mirrored cabinets in bathroom
- Separate study area & internal laundry
- Large open plan living/dining, opens onto balcony
- Large bedroom including built-in wardrobe
- Secure car space in building, lift with intercom

#### View

As advertised or by appointment

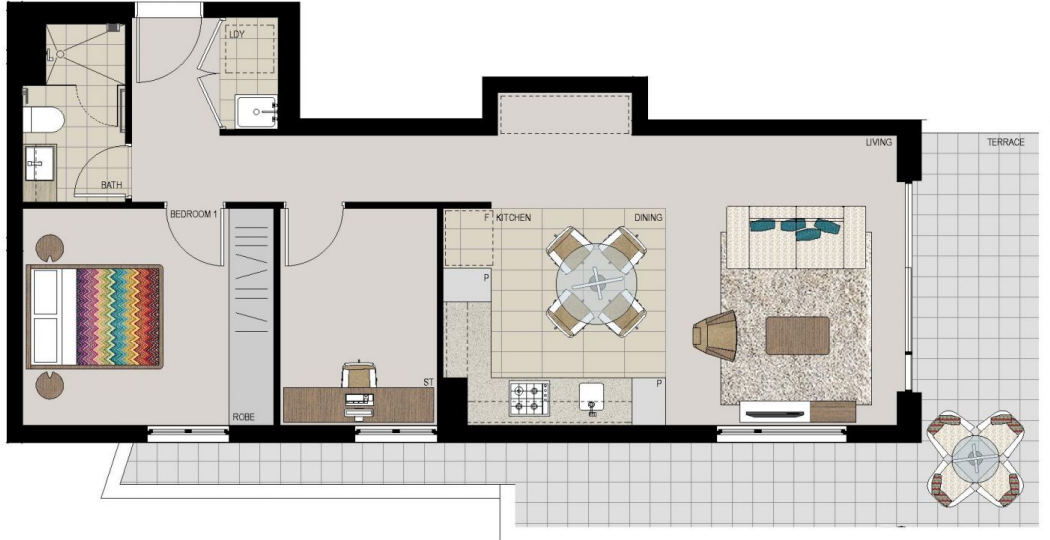
#### Agent

**Sarah Fowell**



 sarah@morton.com.au

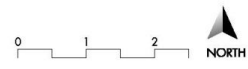
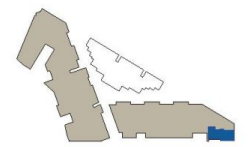
[morton.com.au](http://morton.com.au)



**APARTMENT 132  
LOT 114  
1BED + STUDY**

Internal	61m <sup>2</sup>
External	21m <sup>2</sup>
<b>Total</b>	<b>82m<sup>2</sup></b>

**LAKEVIEW**



**1300 111 088**  
www.washingtonpark.com.au



Disclaimer: This floor plan has been prepared for marketing purposes only. All descriptions, dimensions, depictions and other details in this floor plan may not be to scale and may vary from the property as built. Your attention is drawn to the special conditions of the contract for sale of land. No third party has any authority to make or give any representation or warranty in relation to the property unless the representation or warranty is confirmed by Payce Communities No. 3 Pty Limited and included in the contract for sale of land. [Rev 8\_31.10.13]

