



morton.

Penrith 202/101B Lord Sheffield Circuit

 1  1  1

Located next to Penrith train station and across the rail line to Westfield, this 65sqm one bedroom unfurnished apartment in the as-new Thornton development (completed December 2016), offers convenient living in a master planned community only metres from all the amenities and transport you'd expect.

- Located in the Barlow building, a small block of 19 apartments makes for quiet peaceful living. Positioned on Level 2, dark colour scheme, north facing, large covered balcony, garden views
- Carpeted open living and dining area, LED lighting throughout
- Wool-blend carpeted bedroom with mirrored built-in robes
- Filled with natural light from the floor to ceiling windows
- Reverse cycle air conditioning, block-out roller blinds
- Stylish kitchen with stone bench-tops, soft close cupboards
- Four burner gas cook top with stainless steel appliances
- NBN ready, MATV/PayTV points in living & bedroom
- Quality bathroom with mirrored vanity cabinet, large internal laundry with dryer

morton.com.au

View

As advertised or by appointment

Agent

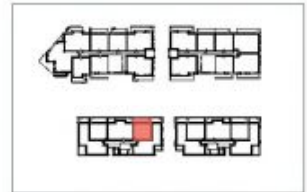
David Lipman

 0409 663 535

 david@morton.com.au



Apartment B202 1 Bed



Internal	54 m ²	
External	13 m ²	
Total	64 m ²	

0 2.5 5m

THORNTON
ThorntonCentral.com.au

Disclaimer: This floor plan has been prepared for marketing purposes only. All descriptions, dimensions, depictions and other details in this floor plan (together the "Information") may not be to scale. The vendor reserves the right to vary or amend the Information without notice. The Information may vary from the actual dimensions, layout and characteristics of the property as built. No third party has any authority whatsoever either as agent or in any way, to make or give any representation or warranty or to bind the vendor in connection with the information or the property.
Dedicated to: 23/02/2014. Version: 01