



**morton.**

**Kirrawee** 309/566 Princes Highway

 2  2  1

Deposit taken

Great opportunity to lease one of Kirrawee's finest and newest apartments in South Village, an iconic development in Sutherland Shire. Conveniently situated only a 180m walk to Kirrawee station, brand new shopping village right at your doorstep with Coles and Aldi supermarkets, eateries & cafes and childcare center. With easy access to the CBD, national parks and Cronulla Beach, South Village offers a unique luxury lifestyle.

- Generous open plan design, apartment size 95sqm
- Very spacious living space with views of city
- Quality designer gas kitchen with European appliances
- Bathroom/ensuite has floor to ceiling tiles, mirrored vanity cabinet
- Large bedrooms with built-in robes
- Entertainer's balcony with gas point for BBQ
- Internal laundry with dryer, air-conditioning, NBN internet
- Security parking plus storage cage, audio intercom life

**morton.com.au**

**View**

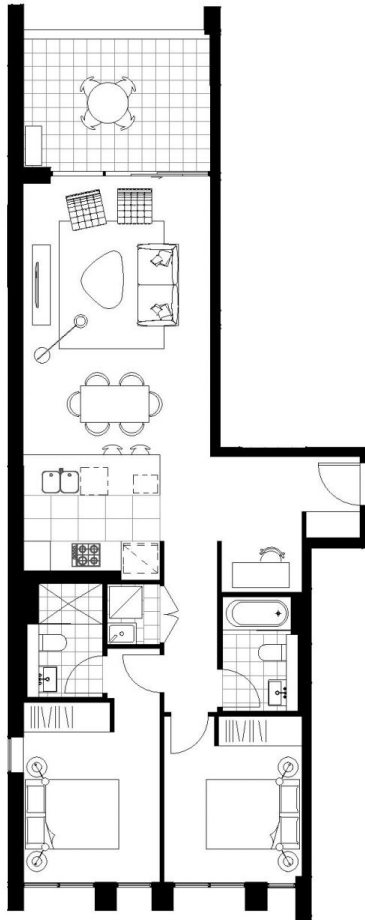
As advertised or by appointment

**Agent**

**Sandy Shen**

 0410 593 246

 rentals@morton.com.au



# VIVID

## LEVEL 3

C3.09 LOT 215

2 BED 2 BATH

INTERNAL 83 Sqm

BALCONY 12 Sqm

**TOTAL 95 Sqm**



**Disclaimer:** This floor plan has been prepared for marketing purposes only. All descriptions, dimensions, locations and other details in this floor plan is not to scale and may vary from the property as built. Your attention is drawn to the special conditions of the contract for sale of land. No third party has any authority to make or give any representation or warranty in relation to the property unless the representation or warranty is contained by South Village Pty Ltd (ACN 864 771 024) and included in the contract for sale of land. Furniture shown is not included. SU/20/00/01

[vividsoothvillage.com.au](http://vividsoothvillage.com.au)

South Village brought to you by

**PAYCE**



Marketed by

**BOSTON**  
MARKETING