



# morton.

**Kirrawee** 502/9 Village Place

 3  2  2

Great opportunity to lease one of Kirrawee's finest and newest apartments in South Village, an iconic development in Sutherland Shire. Conveniently situated only a 180m walk to Kirrawee station, new shopping village right at your doorstep with Coles and Aldi supermarkets, eateries & cafes and childcare center. With easy access to the CBD, national parks and Cronulla Beach, South Village offers a unique luxury lifestyle.

- Luxury skylight bringing in natural light
- Large balcony stretching whole length of apartment
- Fantastic city/water/national park views
- Generous open plan design with bright airy decor
- Quality designer gas kitchen with European appliances
- Bathroom/ensuite has floor to ceiling tiles, mirrored vanity cabinet
- Spacious bedrooms, built-in or walk-in robes
- Lounge room with gas point and payTV points
- Internal laundry with dryer, air-conditioning, NBN internet
- Double parking plus storage cage, audio intercom life access

### View

As advertised or by appointment

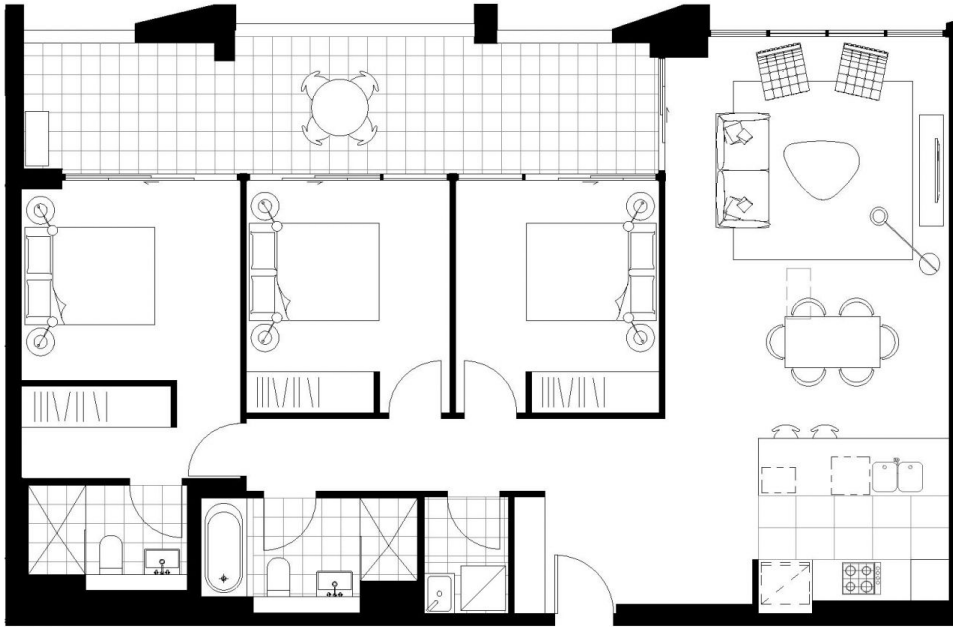
### Agent

**Lisa Xi**

 0401 311 667

 [lisa@morton.com.au](mailto:lisa@morton.com.au)

[morton.com.au](http://morton.com.au)



# VIVID



## LEVEL 5

C5.02 LOT 234

3 BED 2 BATH

INTERNAL 107 Sqm

BALCONY 20 Sqm

**TOTAL 127 Sqm**



**Disclaimer:** This floor plan has been prepared for marketing purposes only. All dimensions, orientations, elevations and other details in this floor plan are not to scale and may vary from the property as built. Your attention is drawn to the special conditions of the contract for sale of land. No third party has any liability to make or give any representation or warranty in relation to the property unless the representation or warranty is contained in South Village Pty Ltd ACH 864 777224 and included in the contract for sale of land. Furniture shown is not included. 9/12/2017

[vividsoothvillage.com.au](http://vividsoothvillage.com.au)

South Village brought to you by

**PAYCE**



Marketed by

**BOSTON**  
MARKETING