



# morton.

**Winmalee** 10 Reid Road

 4  2  2

Investors, renovators and builders will be highly impressed by the great positioning, large land size and excellent future possibilities of this spacious two-level home. Set on an elevated 1,271sqm block in a leafy section of Winmalee, the solid freestanding residence is presented in perfectly liveable condition and represents a fantastic opportunity to capitalise on a substantial landholding in a great part of the Blue Mountains.

- Generous and versatile layout with good proportions throughout
- Large open lounge room plus a dining area with timber flooring
- Neat and tidy kitchen with a leafy outlook over the street
- Lower-level rumpus room, lock-up storage and double garage
- Downstairs bathroom and scope for a self-contained area
- Double bedrooms with built-in robes plus a large front balcony
- A fully fenced backyard featuring an expansive level lawn

### View

As advertised or by appointment

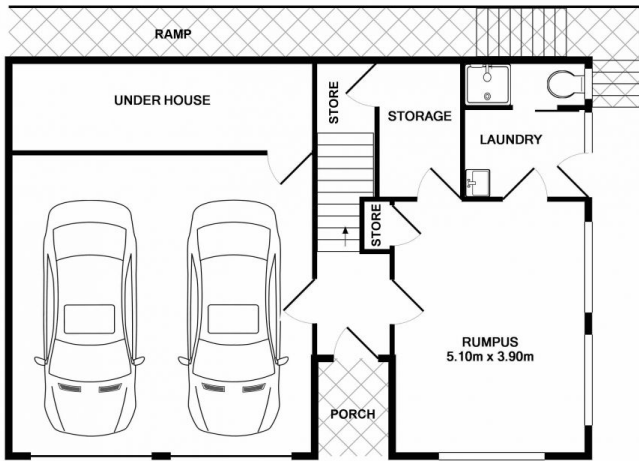
### Agent

**Ian Ahearn**

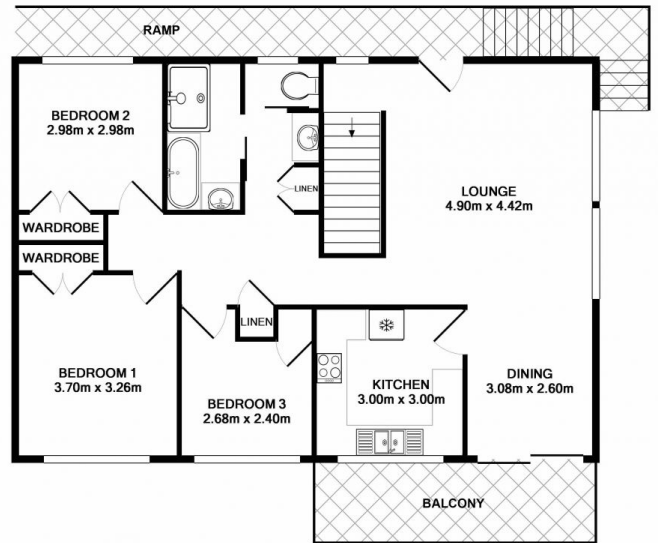
 0457 483 610

 [ian.ahearn@morton.com.au](mailto:ian.ahearn@morton.com.au)

[morton.com.au](http://morton.com.au)



GROUND FLOOR



1ST FLOOR

10 Reid Street, Winmalee

Measurements are approximate. Not to scale. Illustrative purposes only

morton.