



morton.

Little Bay 105/1 Flemming Street

 1  1  1

Prince Henry redevelopment at Little Bay is located opposite peaceful parklands and neighboring bushlands. Only a few minute's walk from Little Bay beach is Coastal Quarter, this distinctive building stylishly brings together the rich art-deco designs and classic elegance of the past with contemporary new spaces and stunning timeless finishes.

- Wool carpet in bedroom and tiles in dining and kitchen areas
- Generous balcony ideal for entertaining or taking in the view
- Kitchen features AEG appliances and stone bench tops
- Internal laundry includes Fisher & Paykel dryer and laundry tub
- Stainless Steel Electrolux fridge and washer dryer combo included
- One secure car space

View

As advertised or by appointment

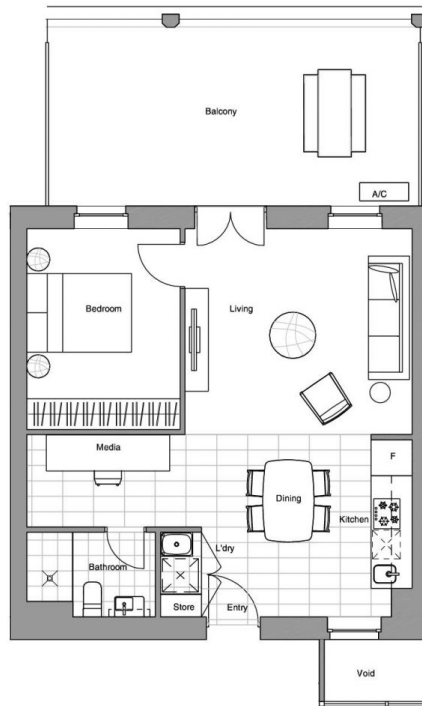
Agent

Sarah Fowell

 0437 492 129

 sarah@morton.com.au

morton.com.au



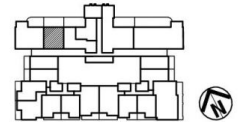
Floor Plan



COASTAL QUARTER
S-105
PRINCE HENRY AT LITTLE BAY

Bedrooms	1 + Study
Bathrooms	1
Basement Parking	1

Internal Area	57 sqm
External Area	26 sqm
TOTAL AREA	83 sqm



Contact
(02) 9256 5968
www.princehenrylittlebay.com.au



**A BROOKFIELD
RESIDENTIAL PROPERTY**

Disclaimer: Whilst the information on this panel has been carefully compiled and is correct at the time of publication (October 2011), the information and illustrations are indicative only and may be subject to change. Brookfield Residential Properties, companies related to it and its agents do not warrant the accuracy of the information or illustrations and do not accept any liability for any error or discrepancy in that information. Interested parties should under take independent inquiries and investigations to satisfy themselves that any details herein are true and correct. The information and illustrations displayed on this panel will not form part of any contract of sale.