



morton.

Penrith A710/2 Lord Sheffield Circuit

 2  2  1

Thornton Central is the cornerstone of Penrith's CBD expansion. This brand new apartment is in stage two of Thornton Central and is directly adjacent to Penrith railway station. Located on the 7th floor with lift access this apartment boasts total size of 85sqm.

- Designed by award-winning firm DKO Architecture
- Cleverly configured interiors maximise the space
- Modern gas kitchen, stone bench tops and European appliances
- Beautifully tiled bathroom and LED lighting under wall cabinet
- Internal laundry with dryer and air-conditioning
- Close to transport, cafés and retail

View

As advertised or by appointment

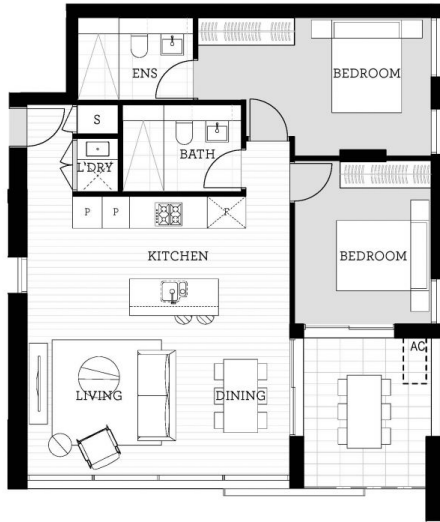
Agent

Ian Ahearn

 0457 483 610

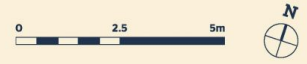
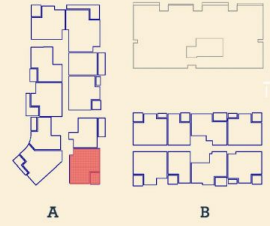
 ian.ahearn@morton.com.au

morton.com.au



Apartment

2 BED - A 710



Internal	75 m ²
External	10 m ²
Total	85 m²

DATE ISSUED 27.07.2015
VERSION 02

Developed by **St Hilliers** **FIRST POINT PROJECTS** | Sales by **LINK** **Home Land Direct** thorntoncentral.com.au

Disclaimer: This floor plan has been prepared for marketing purposes only. All descriptions, dimensions, depictions and other details in this floor plan (together, the "Information") may not be to scale. The vendor reserves the right to vary or amend the Information without notice. The Information may vary from the actual dimensions, layout and characteristics of the property as built. No third party has any authority whatsoever, either expressly or impliedly, to make or give any representation or warranty or to bind the vendor in connection with the information or the property.

THORNTON