



**morton.**

**Wentworth Point** 411/37 Amalfi Drive

 2  2  2

Positioned in the popular Sorrento building in the grounds of Wentworth Point's prestigious Waterfront Estate, this instantly impressive apartment spans a townhouse-like total of 159sqm. Elegantly presented throughout, its bright interiors are appointed with an array of high quality inclusions.

- Contemporary open plan indoor/outdoor layout
- Alfresco spaces, flowing over multiple levels
- Bright interiors with high quality inclusions
- Sleek gourmet kitchen, stone benches, gas appliances
- Generous bedrooms all with built-in robes
- Master with large private balcony and ensuite
- Foxtel-ready and Homelink-enabled

**View**

As advertised or by appointment

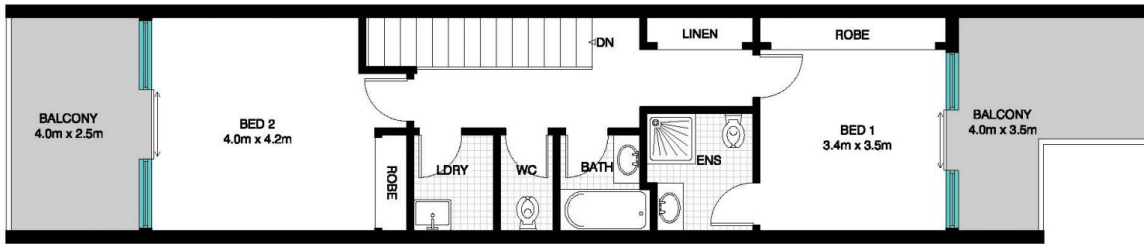
**Agent**

**Sarah Fowell**

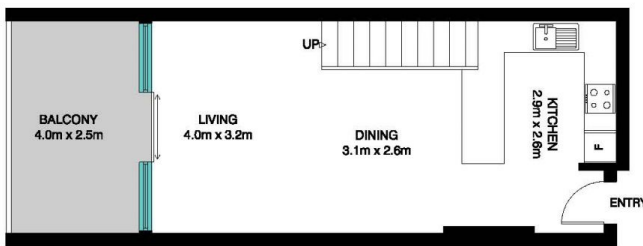
 0437 492 129

 [rentals@morton.com.au](mailto:rentals@morton.com.au)

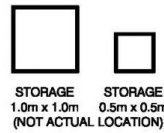
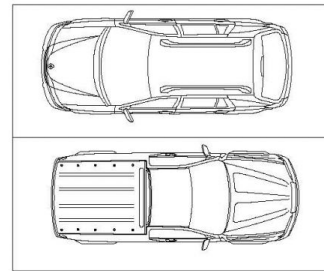
**morton.com.au**



SECOND FLOOR



FIRST FLOOR



All information presented is gathered from sources we believe are reliable. We have no reason to doubt its accuracy, however, cannot guarantee it. The plans shown here are for presentation purposes & are not part of any legal document or title and are subject to errors, omissions & inaccuracies and should not be used as sole reference. All measurements & figures are approximate. Interested parties should make & rely on their own enquiries.

411/37 Amalfi Drive, Wentworth Point