



morton.

Wentworth Point 679/4 The Crescent

 2  2  2

Privately positioned high in the exclusive 'Valencia' building and dominated by breathtaking uninterrupted water views across Homebush Bay, this superb residence is filled with natural light. Occupying a top floor position and flowing over two welcoming levels, this impressive home embodies quality living without compromise.

- Well appointed with stylishly low maintenance finishes
- Secluded master retreat with ensuite, balcony, built-ins
- Open plan lounge and dining areas, three balconies
- Sleek gourmet kitchen, stone benches, gas appliances
- With ducted air conditioning, storage and study alcove
- Resort facilities include pool, gym, library and tennis courts
- Just metres to cafes, shops and a bustling village lifestyle

View

As advertised or by appointment

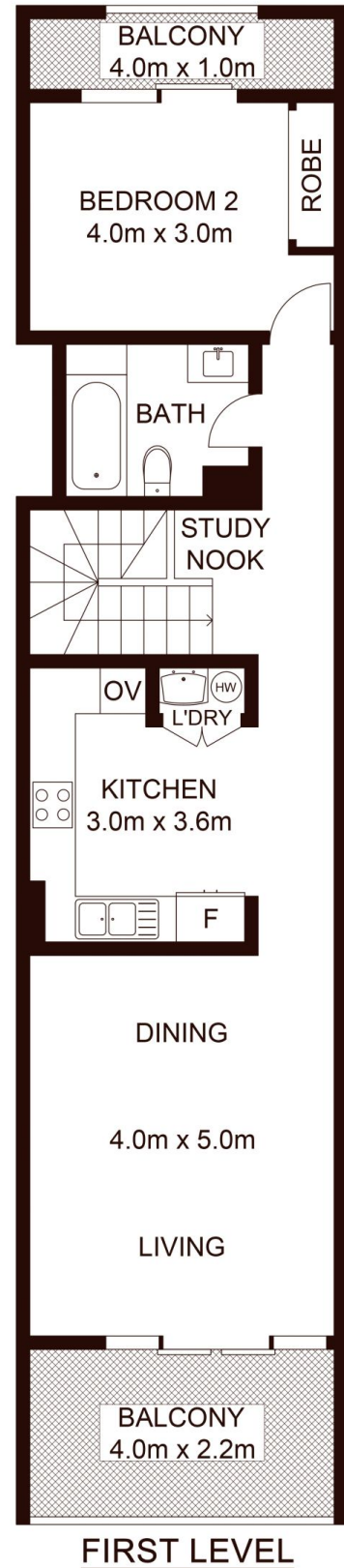
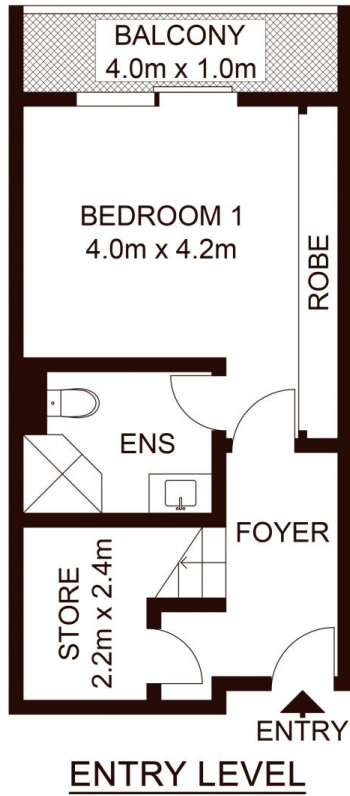
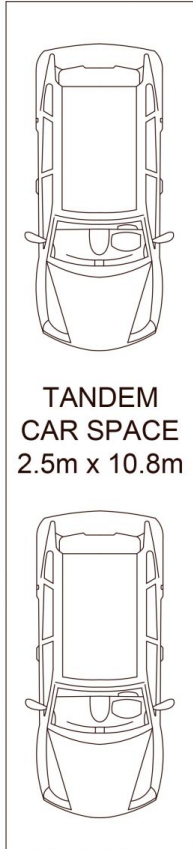
Agent

Sarah Fowell

 0437 492 129

 rentals@morton.com.au

morton.com.au



INTERNAL : 93.4m²
 EXTERNAL : 19.2m²
 CAR SPACE : 27.0m²



679/4 The Crescent, WENTWORTH POINT

Not to scale • All measurements are approximate • Drawn for marketing purposes only • Floorplan by © Industrie Media

