



morton.

Riverwood 421/7 Washington Avenue

 2  2  1

Located in Como complex within the new urban hub of Washington Park, this fantastic apartment - in a master planned community - offers new lifestyle living in a beautiful, quiet and upcoming location.



- Large open plan living/dining, opens onto balcony
- Modern galley style kitchen with mirror splash back
- Offers stainless steel Omega appliances & gas cooktop
- Large double bedrooms including built-in wardrobe
- Master bed with ensuite & bathtub
- Separate study area & internal laundry
- Air conditioning & pet friendly
- Secure car space + 4sqm storage cage
- Rental estimate \$470 - \$500 p/w
- Attractive NET YIELD potential of 3.6%

View

As advertised or by appointment

Agents

Sarah Fowell

 0437 492 129
 rentals@morton.com.au

Calvin Chan

 0406 888 028
 calvin@morton.com.au

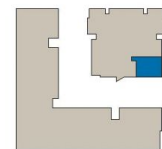
morton.com.au



**APARTMENT 421
LOT 177
2 BED + STUDY**

Internal	78sqm
External	7sqm
Total	85sqm

COMO



1300 111 088
www.washingtonpark.com.au

Proudly developed by
PAYCE

Disclaimer: This floor plan has been prepared for marketing purposes only. All descriptions, dimensions, depictions and other details in this floor plan may not be to scale and may vary from the property as built. Your attention is drawn to the special conditions of the contract for sale of land. No third party has any authority to make or give any representation or warranty in relation to the property unless the representation or warranty is confirmed by Payce Communities No.1 Pty Limited and included in the contract for sale of land. [Rev A 13.05.13]



**We are
Washington Park.**