



morton.

Wentworth Point 320/23 Hill Road

 1  1  1

Offering an ideal East to West flow-through layout this private, spacious and light filled apartment is a perfect opportunity for the first time buyer, investor or downsizer.

- Open plan lounge/dining area with newly laid flooring and feature wall
- Large private balcony with never to be built out bushland views
- Fully fitted kitchen with an abundance of storage
- Bathroom with additional storage
- Split system air conditioning unit and audio/visual security intercom
- Single parking with storage cage
- Separate internal laundry
- Bus services on your door step offering easy access to transport and shopping facilities at Rhodes via new Bennelong Bridge
- Close to The Piazza and Newington Shopping Village with an array of cafes and restaurants at your disposal

View

As advertised or by appointment

Agent

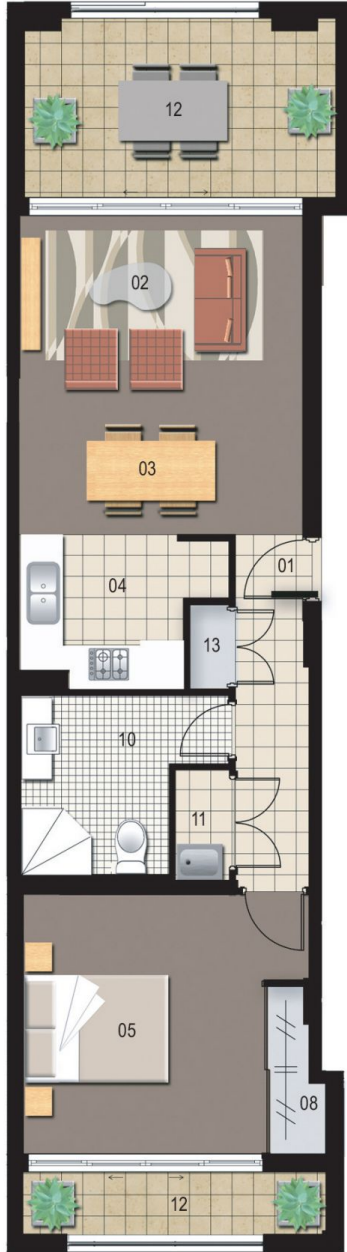
Sarah Fowell

 0437 492 129

 rentals@morton.com.au

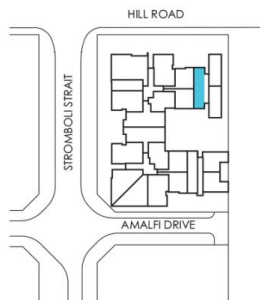
morton.com.au

320/23 Hill Road, Wentworth Point



ENTRY	01
LIVING	02
DINING	03
KITCHEN	04
BEDROOM 1	05
BEDROOM 2	06
BEDROOM 3	07

WARDROBE	08
ENSUITE	09
BATHROOM	10
LAUNDRY	11
BALCONY	12
STORAGE	13



Unit 320

Lot Number	17
Type	1 Bedroom
Unit Area	53 sqm
Balcony	15 sqm
Total	68 sqm