



# morton.

Wentworth Point 548/2 The Crescent

1 1 1

Offering an abundance of space and light this split level floor plan in Lipari, one of Wentworth Point's premium buildings, is sure to impress. Private yet located just meters from the amenities of The Piazza and the peace of the waterfront, it represents a fabulous lifestyle opportunity and is a must to inspect.

- Open plan kitchen and lounge with direct access to sun drenched balcony.
- Master bedroom with separate private balcony
- Fully fitted kitchen with plenty of storage
- Bathroom with tub
- Excellent storage throughout and separate internal laundry
- Ducted aircon throughout & audio/visual security intercom
- Single parking with storage cage
- Building offers exclusive access to a private waterfront pool
- Bus services close by offering easy access to transport and shopping facilities at Rhodes via new Bennelong Bridge

### View

As advertised or by appointment

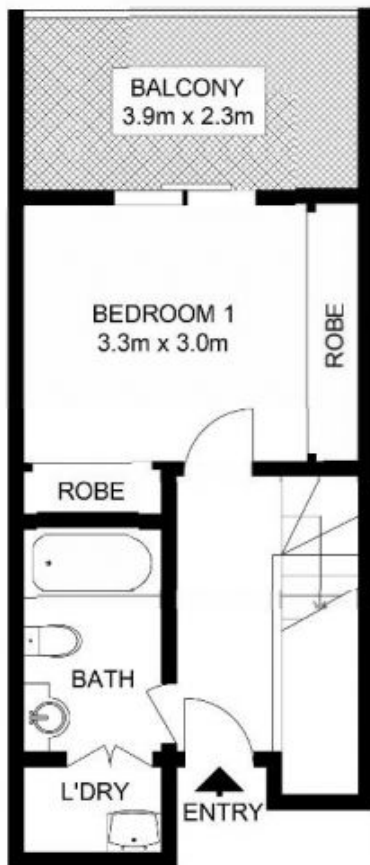
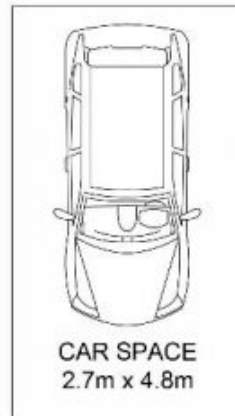
### Agent

**Sarah Fowell**

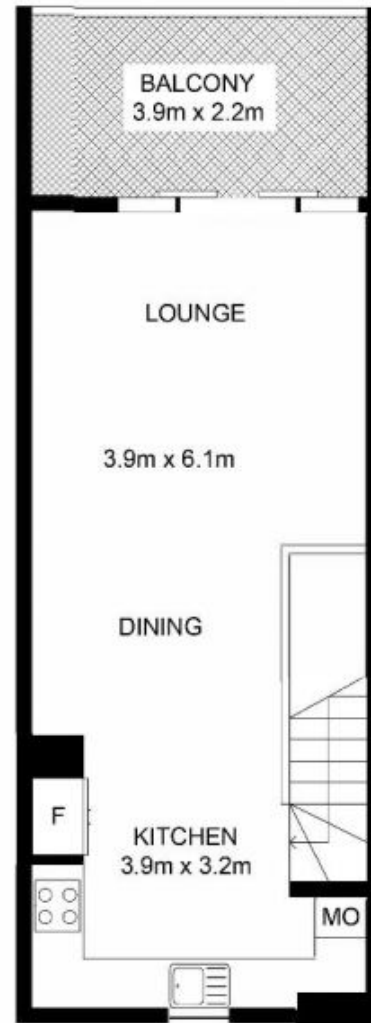
0437 492 129

rentals@morton.com.au

[morton.com.au](http://morton.com.au)



ENTRY FLOOR



FIRST FLOOR

